

ELECTION STUDY 2010

QUESTIONNAIRE STAGE A PRE-ELECTION INTERVIEW

*For questions and information about the 2010 Election Study,
please contact the Göteborg election research team:*

*Sören Holmberg: phone: 031 - 786 12 27, e-mail: soren.holmberg@gu.se
Henrik Oscarsson: phone: 031 - 786 46 66, e-mail: henrik.oscarsson@gu.se
Per Hedberg: phone: 031 - 786 11 99, e-mail: per.hedberg@gu.se*

*Election Study 2010
Department of Political Science
Göteborg University
Box 711
SE 405 30 Göteborg
www.valforskning.pol.gu.se*

INTRODUCTION

We have been commissioned to undertake an impartial interview study of this year's election. Before the questions I would like to inform you that the answers will only be used for statistical analysis. No outsider will get to know how any individual has answered our questions. I am of course under obligation to observe confidentiality.

<p>1 5 8</p>	<p>Question 1 Do you regularly read one or more daily newspapers? By regularly I mean at least once a week.</p> <p><i>yes</i> <i>no</i> <i>DK/does not want to answer</i></p> <div style="border: 1px solid black; padding: 5px; margin-top: 10px;"> <p><i>DAILY NEWSPAPERS INCLUDE MORNING AND EVENING PAPERS AS WELL AS REGULARLY PUBLISHED LOCAL PAPERS. ALSO DAILY NEWSPAPERS ON THE INTERNET.</i></p> </div>
<p>1 2 3 4 7 8</p>	<p>Question 2 How often do you read news and articles about politics in the daily press?</p> <div style="border: 1px solid black; padding: 5px; margin-bottom: 10px;"> <p><i>SHOW CARD 2. READ OUT THE ALTERNATIVES.</i></p> </div> <p><u>never</u> reads news and articles about politics 4 <u>occasionally</u> reads news and articles about politics <u>often</u> reads news and articles about politics reads news and articles about politics <u>every day</u> other answer: _____ <i>DK/does not want to answer</i> → 4</p>
<p>_____ _____ _____</p>	<p>Question 3 When you read about politics in the daily papers: How often do you read about:</p> <div style="border: 1px solid black; padding: 5px; margin-bottom: 10px;"> <p><i>SHOW CARD 3. READ OUT THE ALTERNATIVES. REPEAT THE QUESTION FOR EVERY ISSUE AREA.</i></p> </div> <div style="border: 2px solid black; padding: 5px; margin-bottom: 10px;"> <p>1 reads practically everything 2 reads quite a lot 3 does not read a lot 4 reads nothing/almost nothing 8 <i>DK/does not want to answer</i></p> </div> <p>A. national [<i>i.e. Swedish</i>] politics? B. local politics? C. politics in other countries/international news?</p>

<p style="text-align: center;">↓</p> <p>___</p> <p>___</p> <p>___</p>	<p>Question 4 When it comes to news programmes on radio and TV: How often do you watch/listen to (...NEWS PROGRAMME...)?</p> <div style="border: 1px solid black; padding: 5px; margin: 10px 0;">SHOW CARD 4. READ OUT THE ALTERNATIVES. REPEAT THE QUESTION FOR EVERY PROGRAMME.</div> <div style="border: 1px solid black; padding: 5px; margin: 10px 0;"> 1 6-7 days a week 2 3-5 days a week 3 1-2 days a week 4 more seldom 5 never 8 DK/does not want to </div> <p>A. <i>Rapport/Aktuellt</i> [Swedish TV, SVT]? B. <i>Ekot</i>, <u>long</u> newscasts on Radio Sweden [SR]? C. <i>Nyheter</i> [news on commercial channel TV 4]?</p>
<p>1</p> <p>2</p> <p>3</p> <p>4</p> <p>7</p>	<p>Question 5 Generally speaking, how interested in politics are you? Which of the answers on this card describes you most accurately?</p> <div style="border: 1px solid black; padding: 5px; margin: 10px 0;">SHOW CARD 5</div> <p>1 very interested 2 fairly interested 3 not very interested 4 not at all interested 7 other answer: _____</p>
<p>1</p> <p>2</p> <p>3</p> <p>4</p> <p>7</p> <p>8</p>	<p>Question 6A How often do political discussions occur in your nearest surroundings – in your family, and among your friends and work colleagues?</p> <div style="border: 1px solid black; padding: 5px; margin: 10px 0;">SHOW CARD 6A</div> <p>1 very often 2 fairly often 3 not very often 4 not at all 7 other answer: _____ 8 DK/does not want to answer</p>
<p>1</p> <p>2</p> <p>3</p> <p>4</p> <p>7</p> <p>8</p>	<p>Question 6B What do you usually do yourself when you are in a group of people and the conversation turns to politics? Which of these descriptions fits you best?</p> <div style="border: 1px solid black; padding: 5px; margin: 10px 0;">SHOW CARD 6B OCH READ OUT THE ALTERNATIVES</div> <p>1 I usually do not bother to listen when people start discussing politics 2 I may well listen, but never take part in the discussion 3 It happens, but not too often, that I say what I think 4 I usually take part in the discussion and say what I think 7 other answer: _____ 8 DK/does not want to answer</p>
<p>QUESTIONS 6A – 6B ONLY ASKED IN STAGE A</p>	

<p>1 2 7 8</p>	<p>Question 6C How important do you think this year's election is? Do you care much about which parties win or lose, or do you not think it is very important?</p> <p style="border: 1px solid black; padding: 2px; display: inline-block;">SHOW CARD 6C</p>
<p>1 2 3 4 7 8</p>	<p>Question 6D In general, how much difference do you think there is between the parties in parliament, regarding their political positions?</p> <p style="border: 1px solid black; padding: 2px; display: inline-block;">SHOW CARD 6D</p>
<p>1 5 6 8</p> <p>1 5 8</p>	<p>Question 7 Thinking about this year's election, is there any issue or issues that is/are important when it comes to which party you are going to vote for in the Parliamentary election on 19 September?</p> <p>yes</p> <p>no, no issue important → 8</p> <p>does not intend to vote in parliamentary election → 8</p> <p>DK/does not want to answer → 8</p> <p style="border: 1px solid black; padding: 2px; display: inline-block;">IF RESPONDENT ANSWERS YES</p> <p>What issue or issues? issue(s): _____</p> <hr/> <p style="border: 1px solid black; padding: 2px; display: inline-block;">ADDED QUESTION FOR DETAILED ANSWERS</p> → Is there any other issue that is important when you choose party in the parliamentary election? <p>yes</p> <p>no → 8</p> <p>DK/does not want to answer → 8</p> <p style="border: 1px solid black; padding: 2px; display: inline-block;">IF RESPONDENT ANSWERS YES</p> <p>What other issue or issues? issue(s): _____</p> <hr/>

Question 8

I would like to ask a few questions concerning your opinion about the policies of the parties on various issues. On this card we have put together some issue areas which have been important in Swedish politics in recent years. I begin with employment.

SHOW CARD 8. ASK QUESTIONS BELOW, IN SUCCESSION, FOR EACH ISSUE AREA

Is there, in your opinion, any party or parties with a good policy on (ISSUE AREA)?

Is there, in your opinion, any party or parties with a bad policy on (ISSUE AREA)?

ENTER THE PARTIES MENTIONED BY RESPONDENT. FOR EVERY ISSUE AREA. MORE THAN ONE PARTY IS POSSIBLE. USE PARTY ABBREVIATIONS. IF ANSWER INCLUDES MORE THAN ONE PARTY, ENTER A SPACE BETWEEN THE ABBREVIATIONS.. ENTER 60 FÖR COLLECTIVE EXPRESSIONS FOR C+FP+M+KD TOGETHER, E.G. "THE ALLIANCE". USE 61 FOR COLLECTIVE EXPRESSIONS FOR V+S+MP TOGETHER, E.G. "THE RED-GREENS". ENTER 90 FOR ALL PARTIES, 95 FOR NO PARTY AND 98 FOR DK/DOES NOT WANT TO ANSWER

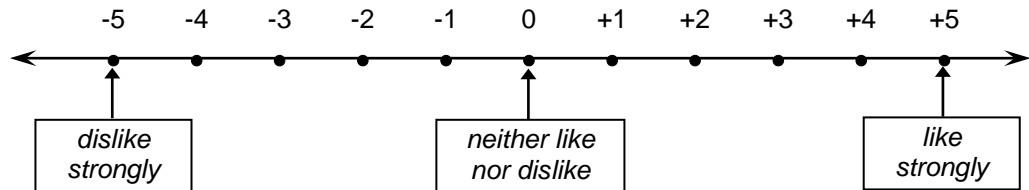
	Parties with a <u>good</u> policy	Parties with a <u>bad</u> policy
Employment	_____	_____
The Swedish economy	_____	_____
Taxes	_____	_____
Issues concerning conditions for business	_____	_____
Issues concerning social security	_____	_____
Issues concerning care of elderly	_____	_____
Health care and hospitals	_____	_____
Issues concerning child care	_____	_____
Pensions	_____	_____
Schools and education	_____	_____

Question 9A

On this card there is a kind of scale.

SHOW CARD 9

I would like you to use it to illustrate how much you like or dislike the different parties. If I get to a party you do not know, or do not know enough about to judge, just say so.



READ OUT ONE PARTY AT A TIME AND ASK QUESTION BELOW. IF RESPONDENT DOES NOT KNOW THE PARTY, ENTER 96. ENTER 98 FOR DK AND 99 IF RESPONDENT DOES NOT WANT TO ANSWER.

Where would you place:

- ___ A. Centre Party?
- ___ B. Moderate Party?
- ___ C. Left Party?
- ___ D. People's Party Liberals?
- ___ E. Social Democrats?
- ___ F. Green Party?
- ___ G. Christian Democrats?
- ___ H. Sweden Democrats?
- ___ I. Feminist initiative?
- ___ J. Pirate Party?

Question 9B

READ OUT ONE PARTY LEADER AT A TIME AND ASK QUESTION BELOW. IF RESPONDENT DOES NOT KNOW THE PARTY LEADER, ENTER 96. ENTER 98 FOR DK AND 99 IF RESPONDENT DOES NOT WANT TO ANSWER.

We use the same scale for the party leaders. If I mention a party leader you do not know, or do not know enough about, just say so. Where would you place:

- ___ A. Maud Olofsson (*Centre Party*)?
- ___ B. Fredrik Reinfeldt (*Moderate Party*)?
- ___ C. Lars Ohly (*Left Party*)?
- ___ D. Jan Björklund (*People's Party Liberals*)?
- ___ E. Mona Sahlin (*Social Democrats*)?
- ___ F. Peter Eriksson (*Green Party*)?
- ___ G. Maria Wetterstrand (*Green Party*)?
- ___ H. Göran Hågglund (*Christian Democrats*)?
- ___ I. Jimmie Åkesson (*Sweden Democrats*)?
- ___ J. Gudrun Schyman (*Feminist Initiative*)?
- ___ K. Rick Falkvinge (*Pirate Party*)?

	<p>Question 10A Do you intend to vote in this year's parliamentary election?</p> <p>1 <i>yes</i> 3 <i>possibly/DK</i> 5 <i>no</i> 8 <i>does not want to answer</i></p>
<p>1 2 3 4 5 6 7 8 9 10 12 13 98 99</p>	<p>Question 10BA</p> <p>R. INTENDS TO VOTE, I.E. ALTERNATIVE 1 IN Q 10A → Which party do you intend to vote for in the parliamentary election?</p> <p>R. HESITANT OR DOES NOT INTEND TO VOTE, I.E. ALTERNATIVE 3, 5 OR 8 IN Q 10A → If you were to vote, for which party would you then vote in the parliamentary election?</p> <p>1 <i>Left Party</i> 2 <i>Social Democrats</i> 3 <i>Centre Party</i> 4 <i>People's Party Liberals</i> 5 <i>Moderate Party</i> 6 <i>Christian Democrats</i> 7 <i>Green Party</i> 8 <i>Sweden Democrats</i> 9 <i>Feminist Initiative</i> 10 <i>Pirate Party</i> 12 <i>other party (state which):</i> _____ 13 <i>blank</i> 98 <i>has not decided/DK</i> 99 <i>does not want to answer</i></p>
	<p>ADDED QUESTION FOR RESPONDENTS WHO HAVE NOT DECIDED, OR DO NOT KNOW WHICH PARTY TO VOTE FOR</p> <p>Question 10BB Towards which party are you leaning, when it comes to voting?</p> <p>1 <i>Left Party</i> 2 <i>Social Democrats</i> 3 <i>Centre Party</i> 4 <i>People's Party Liberals</i> 5 <i>Moderate Party</i> 6 <i>Christian Democrats</i> 7 <i>Green Party</i> 8 <i>Sweden Democrats</i> 9 <i>Feminist Initiative</i> 10 <i>Pirate Party</i> 12 <i>other party (state which):</i> _____ 13 <i>blank</i> 98 <i>DK</i> 99 <i>does not want to answer</i></p>

Q 10BC TO BE ASKED TO PERSONS WHO HAVE GIVEN A PARTY IN Q 10BA OR 10BB

Question 10BC

Is there any other party or parties you are choosing from in the parliamentary election?

- 1 *yes*
 5 *no* _____ → 11A
 8 *DK/does not want to answer* _____ → 11A

IF YES → Which party or parties?

party/parties: _____

ADDED Q. FOR COMPLETE ANSWERS

Besides the parties you have mentioned, is there yet another party or parties you are choosing from in the parliamentary election this year?

IF YES → Which party or parties?

party/parties: _____

QUESTIONS 10B – 10E AND QUESTIONS 11 – 14 ARE NOT INCLUDED IN STAGE A
 QUESTION 10BC ASKED AS QUESTION 10E IN STAGE B

Question 15

You say you are going to vote for (...PARTY, see Q10BA)/are leaning towards voting for (...PARTY, see Q10BB) in this year's parliamentary election. How important are the following reasons for to your choice of party?

SHOW CARD 15 OCH READ OUT THE ALTERNATIVES


- | | |
|---|--|
| 1 | absolutely one of the most important reasons |
| 2 | a fairly important reason |
| 3 | not a very important reason |
| 4 | not at all an important reason |
| 8 | <i>DK/does not want to answer</i> |

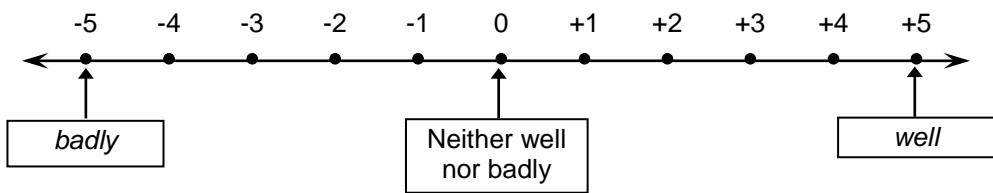
READ OUT ONE REASON AT A TIME

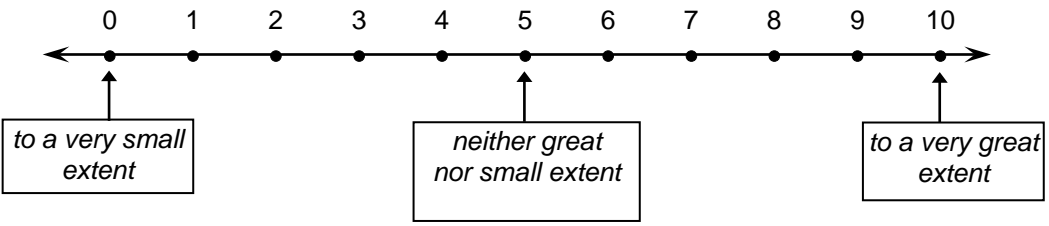
Using the answers on this card, how important a reason is it that:

- ↓
- ___ A. The party's policies are usually advantageous to my occupational group?
 ___ B. The party has a good leader?
 ___ C. I feel like a supporter of the party?
 ___ D. The party has good policies on many of the issues that have recently featured in the public debate?
 ___ E. The party has competent people who can run the country?
 ___ F. The party has a good political ideology?
 ___ G. I always vote for the party?
 ___ H. The party has good parliamentary candidates in my constituency?
 ___ I. The party has good policies in issues I consider important?
 ___ J. The party has done a good job in politics in recent years?
 ___ K. The party has a good programme for the future?
 ___ L. It is a big party, and therefore has a better chance than a smaller party to get its policies through?
 ___ M. It is a small party, and in danger of not reaching the four per cent threshold to parliamentary representation?
 ___ N. The party has impressed during the election campaign?
 ___ O. People in my neighbourhood sympathise with the party?

QUESTION 16 NOT ASKED IN STAGE A

<p>1</p> <p>2</p> <p>3</p> <p>4</p> <p>7</p> <p>8</p>	<p>Question 17 Generally speaking, what is your view about personal voting in Swedish parliamentary elections? You may choose one of the following responses.</p> <p style="border: 1px solid black; padding: 2px; text-align: center;"><i>SHOW CARD 17 OCH READ OUT THE ALTERNATIVES</i></p> <p>no personal vote should exist, only choice between parties</p> <p>there should be an element of personal voting, but to a lesser extent than in this year's parliamentary election</p> <p>there should be an element of personal voting, and the level used in this year's parliamentary election is about right</p> <p>the element of personal voting should be increased further in future parliamentary elections</p> <p><i>other answer:</i> _____</p> <p><i>DK/does not want to answer</i></p>
<p>1</p> <p>5</p> <p>8</p> 	<p>Question 18A Do you know the name of one or more of the persons appearing on the party lists in your parliamentary constituency?</p> <p>yes _____ → 18B</p> <p>no _____ → 19A</p> <p><i>DK/does not want to answer</i> _____ → 19A</p>
<p>8</p>	<p>Question 18B To which party does he/she belong?</p> <p style="border: 1px solid black; padding: 2px;"><i>ENTER THE FIRST NAME MENTIONED BY R. AND ASK THE FOLLOW-UP QUESTION. DO NOT FORGET TO ENTER THE PARTY (USE ABBREVIATIONS) AND GENDER (M/W) FOR CANDIDATES MENTIONED BY RESPONDENT.</i></p> <p>Can you remember the name of any other person?</p> <p style="border: 1px solid black; padding: 2px;"><i>ENTER THE THREE NEXT NAMES MENTIONED BY R. AND ASK FOLLOW-UP QUESTION</i></p> <p>To which party does he/she belong?</p> <p style="border: 1px solid black; padding: 2px;"><i>ENTER THE FOUR FIRST NAMES MENTIONED BY RESPONDENT</i></p> <p>yes, name 1: _____ party: _____ gender: _____</p> <p>yes, name 2: _____ party: _____ gender: _____</p> <p>yes, name 3: _____ party: _____ gender: _____</p> <p>yes, name 4: _____ party: _____ gender: _____</p> <p><i>DK/does not want to answer/does not remember</i></p>
	<p>Question 19A Which party or parties would you prefer to see in government after this year's election?</p> <p style="border: 1px solid black; padding: 2px; display: inline-block;"><i>ADDED QUESTION</i></p> <p style="margin-left: 20px;">→ Would you like any other party to be included in the government?</p> <p><i>parties:</i> _____</p> <p style="border: 1px solid black; padding: 2px;"><i>ENTER ALL PARTIES MENTIONED BY RESPONDENT. FOR "GRAND COALITION" OR "ALL PARTIES", ENTER 90. ENTER 60. FOR COLLECTIVE EXPRESSIONS FOR C+FP+M+KD TOGETHER, E.G. "THE ALLIANCE". ENTER 61 FOR COLLECTIVE EXPRESSIONS FOR V+S+MP TOGETHER, E.G. "THE RED-GREENS". ENTER 98 FOR DK/DOES NOT WANT TO ANSWER.</i></p>

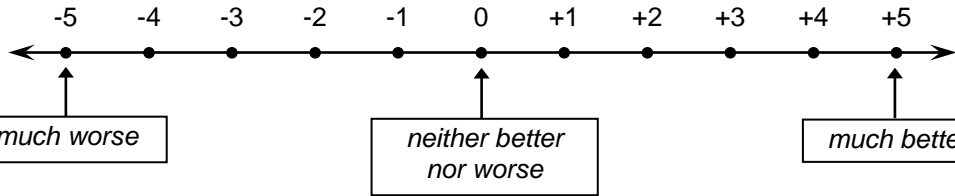
8	<p>Question 19B Who would you prefer as Prime Minister of the government after the election?</p> <p>Prime Minister: _____</p> <p>DK/does not want to answer</p>
<p>↓</p> <p>_____</p> <p>_____</p> <p>_____</p> <p>_____</p> <p>_____</p> <p>_____</p>	<p>Question 20 How do you think some of the smaller parties will perform in this year's election?</p> <p>READ OUT QUESTION FOR ONE PARTY AT A TIME..</p> <p>1 yes 5 no 8 DK/does not want to answer</p> <p>Do you think (...PARTY) will get at least 4 per cent in the election, and thus be represented in parliament after the election?</p> <p>Left Party Christian Democrats Centre Party Feminist Initiative Pirate Party Sweden Democrats</p>
<p>↓</p> <p>_____</p> <p>_____</p>	<p>Question 21A Now a few questions about how the Alliance parties and the opposition parties have performed since the 2006 election. You may answer using the scale on this card.</p> <p>SHOW CARD 21. READ OUT ONE QUESTION AT A TIME. ENTER 98 FOR DK/DOES NOT WANT TO ANSWER.</p>  <p>A. How do you think the four Alliance parties, i.e. the Centre Party, People's Party Liberals, Moderate Party and the Christian Democrats, have performed as a government since the 2006 election?</p> <p>B. How do you think the three red-green parties, i.e. the Left Party, Social Democrats and the Green Party, have performed as opposition parties since the 2006 election?</p>
<p>↓</p> <p>_____</p> <p>_____</p>	<p>Question 21B Looking forward, using the same scale:</p> <p>A. How do you think the four Alliance parties, i.e. the Centre Party, People's Party Liberals, Moderate Party and the Christian Democrats, will perform as a government in the next four years if they can form a government after the election?</p> <p>B. How do you think the three red-green parties, i.e. the Left Party, Social Democrats and the Green Party, will perform as a government in the next four years if they can form a government after the election?</p>

<p>↓</p> <p>—</p> <p>—</p> <p>—</p>	<p>Question 22A-C Now a question about how the Alliance parties have behaved towards the citizens since the 2006 election. You may answer using the scale on this card.</p> <p>SHOW CARD 22AC</p>  <p>READ OUT ONE ASPECT AT A TIME. ASK THE QUESTION BELOW. ENTER 98 FOR DK, AND 99 IF RESPONDENT DOES NOT WANT TO ANSWER.</p> <p>To what extent do you think that the Alliance parties since the 2006 election....</p> <p>A. have made themselves aware of the wishes of the citizens? B. have explained their policies to the citizens? C. have tried to meet the wishes of the citizens?</p>
<p>↓</p> <p>—</p>	<p>Question 22D Using the same scale, to what extent do you think that the Alliance parties have fulfilled their election promises since the 2006 election?</p> <p>SHOW CARD 22D. ENTER 98 FOR DK AND 99 IF R. DOES NOT WANT TO ANSWER.</p> <p><i>respondent's judgement of the extent to which the Alliance parties have fulfilled their election promises</i></p>
<p>↓</p> <p>—</p> <p>—</p> <p>—</p> <p>—</p> <p>—</p> <p>—</p> <p>—</p>	<p>Question 23 Before the election in 2006, the following party pledges were made by the Alliance parties. For each and every one of them, do you think that the pledge was fulfilled, partly fulfilled, or not fulfilled? If you do not know any of the pledges, just say so.</p> <p>SHOW CARD 23 AND READ OUT THE ELECTION PROMISES.</p> <div style="border: 1px solid black; padding: 5px; margin: 10px 0;"> <p>1 fulfilled 3 partly fulfilled 5 not fulfilled 8 DK/no opinion/not familiar with the promise 9 does not want to answer</p> </div> <p>lower the income taxes for low- and medium level wage earners? introduce a law that oblige citizens to intervene when others are in distress? introduce a job guarantee for all under 25 years of age after 50 days of unemployment? introduce a tax reduction for households services? abolish the temporary austerity tax for earners of high incomes? introduce a national test in Swedish language in 3rd grade? replace the state tax on real estate with a low municipal fee?</p>

Question 24A

SHOW CARD 24A

What is your view about the development in the following areas if you compare with the situation at the time of the 2006 election? You may answer using the scale on this card



READ OUT ONE AREA AT A TIME ASK THE QUESTION BELOW. ENTER 98 FOR NO OPINION/DK AND 99 IF RESPONDENT DOES NOT WANT TO ANSWER.

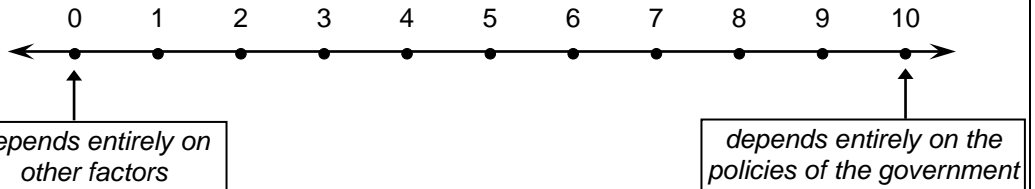
We begin with employment, has it become better or worse, or do you have no opinion?

- ___ employment
- ___ health care
- ___ the Swedish economy
- ___ social welfare
- ___ schools and education
- ___ the environment
- ___ refugees and immigration

Question 24B

SHOW CARD 24B

To what extent do you think the development in the different areas since the time of the 2006 election depends on the policies of the government, on other factors, or do you have no opinion? Answer using the scale on this card.



READ OUT ONE AREA AT A TIME ASK THE QUESTION BELOW. ENTER 98 FOR NO OPINION/DK AND 99 IF RESPONDENT DOES NOT WANT TO ANSWER.

We begin with employment. To what extent do you think that the development in terms of /...AREA.../ depends on the policies of the government, on other factors, or do you have no opinion?

- ___ employment
- ___ health care
- ___ the Swedish economy
- ___ social welfare
- ___ schools and education
- ___ the environment
- ___ refugees and immigration

QUESTION 26A/B IS NOT ASKED TO RESPONDENTS WHO WERE NOT ELIGIBLE TO VOTE IN THE 2006 PARLIAMENTARY ELECTION. QUESTION 26C/D IS NOT ASKED TO RESPONDENTS WHO WERE NOT ELIGIBLE TO VOTE IN THE 2009 ELECTION TO THE EU PARLIAMENT.

<p>1 2 4 5 6 8</p>	<p>Question 26A Did you vote in the 2006 parliamentary election??</p> <p>yes does not remember for sure, but probably no, did not vote/R does not believe R voted → 26C not eligible to vote → 26C DK/does not want to answer → 26C yes 26C</p>
<p>1 2 3 4 5 6 7 8 12 98</p>	<p>Question 26B Which party did you vote for in the 2006 parliamentary election?</p> <p>Left Party Social Democrats Centre Party People's Party Liberals Moderate Party Christian Democrats Green Party Sweden Democrats other party (state which): _____ does not remember/DK/does not want to answer</p>
<p>1 2 4 5 6 8</p>	<p>Question 26C Did you vote in the EU parliament election in June 2009?</p> <p>yes does not remember for sure, but probably R does not believe R voted → 28A no, did not vote → 28A not eligible to vote → 28A DK/does not want to answer → 28A</p>
<p>1 2 3 4 5 6 7 8 9 10 11 12 98</p>	<p>Question 26D Which party did you vote for in the 2009 election to the EU parliament?</p> <p>Left Party Social Democrats Centre Party People's Party Liberals Moderate Party Christian Democrats Green Party Sweden Democrats Feminist Initiative Pirate Party June List other party (state which): _____ does not remember/DK/does not want to answer</p>

QUESTION 27 NOT ASKED IN STAGE A

	<p>Question 28A Generally speaking, how much faith do you have in Swedish politicians? Do you have a great deal of faith, a fair amount of faith, not much faith or very little faith?</p> <p style="text-align: center;">SHOW CARD 28A</p>
1	a great deal of faith
2	a fair amount of faith
3	not much faith
4	very little faith
7	other answer: _____
8	DK/does not want to answer

QUESTIONS 28B AND 28C NOT ASKED IN STAGE A

	<p>Question 29A Many people consider themselves adherents of a specific party. But there are also many others who do not have any such attachment to any of the parties. Do you usually think of yourself as an adherent of any particular party, or do you have no such attachment to any of the parties?</p>
1	yes, thinks of him/herself as an adherent of a specific party
3	DK/hesitant
5	no, does not think of him/herself as an adherent of a specific party → 29D
9	does not want to answer

	<p>Question 29B Which party do you like best?</p>
1	Left Party
2	Social Democrats
3	Centre Party
4	People's Party Liberals
5	Moderate Party
6	Christian Democrats
7	Green Party
8	Sweden Democrats
9	Feminist Initiative
10	Pirate Party
12	other party (state which): _____ → 31A
98	DK/does not want to answer

	<p>Question 29C Some people are strongly convinced adherents of their party. Others are not so strongly convinced. Do you yourself belong to the strongly convinced adherents of your party?</p>
1	yes, strongly convinced
5	no, not strongly convinced
7	other answer: _____ → 30
8	does not want to answer

<p>1 2 3 4 5 6 7 8 9 10 12 95 98</p>	<p>Question 29D Still, is there any party that you consider yourself closer to than any of the other parties? (Which party?)</p> <p>Left Party Social Democrats Centre Party People's Party Liberals Moderate Party Christian Democrats Green Party Sweden Democrats Feminist Initiative Pirate Party other party (state which): _____ no, no party → 31A DK/does not want to answer → 31A</p>
<p>1 2 3 4 5 6 7 8 9 10 12 95 98</p>	<p>Question 30 Which party do you like <u>second best</u>?</p> <p style="border: 1px solid black; padding: 2px; text-align: center;"><i>IF POSSIBLE, ENTER ONLY ONE PARTY</i></p> <p>Left Party Social Democrats Centre Party People's Party Liberals Moderate Party Christian Democrats Green Party Sweden Democrats Feminist Initiative Pirate Party other party (state which): _____ no party DK/does not want to answer</p>

Question 31A

On this card there are a number of words and expressions that can be used to describe different characteristics of party leaders and parties. I would like you to tell me how appropriately you think that each of them describes Mona Sahlin, Fredrik Reinfeldt, the Social Democrats and the Moderate Party, respectively. We will only ask about the two biggest parties and their leaders

SHOW CARD 31A

- | | |
|---|----------------------------|
| 1 | very appropriate |
| 2 | fairly appropriate |
| 3 | not very appropriate |
| 4 | not at all appropriate |
| 8 | DK/does not want to answer |

FOR EACH PARTY LEADER AND EACH PARTY, READ OUT ONE EXPRESSION AT A TIME AND LET R. CHOOSE ALTERNATIVE. ENTER RESPONSE NUMBER.

Thinking of (...PARTY LEADER), how appropriate do you think the following expressions are:

Mona Sahlin

trustworthy

inspiring

knowledgeable

friendly

knows the thoughts and feelings of ordinary people

speaks so that ordinary people can understand

strong leader

Fredrik Reinfeldt

trustworthy

inspiring

knowledgeable

friendly

knows the thoughts and feelings of ordinary people

speaks so that ordinary people can understand

strong leader

Question 31B
Thinking of (...PARTY), how appropriate do you think the following expressions are:

SHOW CARD 31B

Social Democrats

___ trustworthy
___ inspiring
___ friendly
___ knows the thoughts and feelings of ordinary people
___ has competent people who can run the country
___ has clear policies
___ usually keeps its election promises

Moderate Party

___ trustworthy
___ inspiring
___ friendly
___ knows the thoughts and feelings of ordinary people
___ has competent people who can run the country
___ has clear policies
___ usually keeps its election promises

Question 31C
Now a question about different emotions political parties can cause. Answer using this card.

SHOW CARD 31C

FOR EACH PARTY, READ OUT ONE EMOTION AT A TIME AND LET RESPONDENT CHOOSE AN ALTERNATIVE. ENTER RESPONSE NUMBERS. ENTER 98 FOR DK AND 99 IF RESPONDENT DOES NOT WANT TO ANSWER.

To what extent has (...PARTY...) during this year's election campaign made you feel(...EMOTION...)?

Social Democrats

___ angry
___ worried
___ afraid
___ enthusiastic
___ downhearted
___ hopeful

Moderate Party

___ angry
___ worried
___ afraid
___ enthusiastic
___ downhearted
___ hopeful

QUESTIONS 31A AND 31B ONLY ASKED IN STAGE A
QUESTION 32 NOT ASKED IN STAGE A

<p style="text-align: center;">Question 33</p> <p>Here are some policy proposals that have appeared in the political debate. What is your opinion about each of them?</p> <div style="border: 1px solid black; padding: 5px; text-align: center; margin: 10px auto; width: 40%;">SHOW CARD 33</div> <div style="border: 1px solid black; padding: 5px; margin: 10px auto; width: 60%;"> <p>1 very good proposal</p> <p>2 fairly good proposal</p> <p>3 neither good nor bad proposal</p> <p>4 fairly bad proposal</p> <p>5 very bad proposal</p> <p>8 DK/does not want to answer</p> </div> <div style="border: 1px solid black; padding: 5px; text-align: center; margin: 10px auto; width: 40%;">READ OUT PROPOSALS ONE AT A TIME</div> <p>Using the answers on this card, what is your opinion about the proposal to</p> <p>___ A. Reduce the size of the public sector?</p> <p>___ B. Reduce defence expenditure?</p> <p>___ C. Reduce social benefits?</p> <p>___ D. Cut taxes?</p> <p>___ E. Decriminalise all file sharing on the Internet?</p> <p>___ F. Abolish the child care allowance?</p> <p>___ G. Sell off state owned businesses and utilities to private interests?</p> <p>___ H. Reduce income differences in society?</p> <p>___ I. Increase the proportion of health care run by private interests?</p> <p>___ J. Increase financial support to less densely populated areas of the country?</p> <p>___ K. Sweden should in the long run abolish nuclear power?</p>	<p style="text-align: center;">Question 34</p> <p>What is your view on the so-called FRA law?</p> <div style="border: 1px solid black; padding: 5px; text-align: center; margin: 10px auto; width: 40%;">SHOW CARD 34</div> <p>1 very positive</p> <p>2 fairly positive</p> <p>3 neither positive nor negative</p> <p>4 fairly negative</p> <p>5 very negative</p> <p>6 no firm view on the issue</p> <p>7 do not know the FRA law</p> <p>77 other answer: _____</p> <p>98 DK/does not want to answer</p>
<p style="text-align: center;">Question 35</p> <p>Generally speaking, what is your view on the EU?</p> <div style="border: 1px solid black; padding: 5px; text-align: center; margin: 10px auto; width: 40%;">SHOW CARD 35</div> <p>1 very positive</p> <p>2 fairly positive</p> <p>3 neither positive nor negative</p> <p>4 fairly negative</p> <p>5 very negative</p> <p>6 no firm view on the issue</p> <p>7 other answer: _____</p> <p>8 DK/does not want to answer</p>	

<p>1 2 3 7 8</p>	<p>Question 36 There are varying views about nuclear as an energy source. What is your opinion? Are you, on the whole, in favour of or against nuclear power, or do you have no definite opinion on the issue?</p> <p style="text-align: center;">SHOW CARD 36</p> <p>on the whole in favour of nuclear power on the whole against nuclear power no definite opinion on the issue <i>other answer:</i> _____ <i>DK/does not want to answer</i></p>
<p>1 2 3 4 5 7 8</p>	<p>Question 37 What is your opinion about the use of nuclear power in Sweden?</p> <p style="text-align: center;">SHOW CARD 37 AND READ OUT ALTERNATIVES</p> <p>abolish nuclear power as soon as possible abolish nuclear power but use the nuclear power reactors we have until they have expired use nuclear power and replace the current 10 reactors with at most 10 new reactors use nuclear power and build more reactors than the current 10 in the future no definite opinion on the issue <i>other answer:</i> _____ <i>DK/does not want to answer</i></p>
<p>98</p>	<p>Question 38 Which party or parties are, as you see it, in <u>favour</u> of abolishing nuclear power in Sweden?</p> <p style="border: 1px solid black; padding: 5px;">USE THE PARTY ABBREVIATIONS IN QUESTION 38: V=LEFT PARTY, S=SOCIAL DEMOCRATS, C=CENTRE PARTY, FP=PEOPLE'S PARTY LIBERALS, M=MODERATE PARTY, MP=GREEN PARTY, KD=CHRISTIAN DEMOCRATS, SD=SWEDEN DEMOCRATS, FI=FEMINIST INITIATIVE AND PP=PIRATE PARTY. NAMES OF OTHER PARTIES SHOULD BE ENTERED WITHOUT ABBREVIATIONS. OTHER ANSWERS TO BE ENTERED VERBATIM.</p> <p><i>party/parties:</i> _____ <i>DK/does not want to answer/does not remember</i></p>

Question 39

Again, I would like to ask some questions about your views about the policies of the political parties in some issue areas. I begin with issues related to the European Union, EU.

SHOW CARD 39. ASK QUESTIONS BELOW, IN SUCESSION, FOR EACH OF THE ISSUE AREAS

Is there any party or parties that, in your view, have a good policy on (ISSUE AREA)?

Is there any party or parties that, in your view, have a bad policy on (ISSUE AREA)?

ENTER THE PARTIES R MENTIONS NEXT TO THE RESPECTIVE ISSUE AREA. SEVERAL PARTIES ARE POSSIBLE. USE PARTY ABBREVIATIONS. WHEN MORE THAN ONE PARTY IS MENTIONED, TYPE A SPACE BETWEEN THE PARTY ABBREVIATIONS. ENTER 60 FOR COLLECTIVE EXPRESSIONS OF C+FP+M+KD TOGETHER, E.G. "THE ALLIANCE". ENTER 61 FOR COLLECTIVE EXPRESSIONS OF V+S+MP TOGETHER, E.G. THE RED-GREENS". ENTER 90 FOR "ALL PARTIES", 95 FOR "NO PARTY" AND 98 FOR DK/DOES NOT WANT TO ANSWER.

	Parties with a <u>good</u> policy	Parties with a <u>bad</u> policy
Issues concerning the European union, EU	_____	_____
Refugee and immigration issues	_____	_____
Environmental issues	_____	_____
Energy and nuclear power	_____	_____
Issues concerning law and order	_____	_____
Issues concerning equality between men and women	_____	_____
Issues concerning rural parts of the country	_____	_____
Issues concerning Swedish foreign and security policy	_____	_____
The Swedish military presence in Afghanistan	_____	_____

Question 40

Here are some policy proposals regarding Sweden's relations with other countries. What is your opinion about each of them?

SHOW CARD 40

- | | |
|---|-----------------------------------|
| 1 | very good proposal |
| 2 | fairly good proposal |
| 3 | neither good nor bad proposal |
| 4 | fairly bad proposal |
| 5 | very bad proposal |
| 8 | <i>DK/does not want to answer</i> |

READ OUT PROPOSALS ONE BY ONE

Choosing from the responses on this card, what is your opinion about the proposal to

- | | |
|--|---|
| <p>___</p> <p>___</p> <p>___</p> <p>___</p> <p>___</p> <p>___</p> <p>___</p> <p>___</p> <p>___</p> | <p>A. Sweden should withdraw from the EU?</p> <p>B. Sweden should introduce the Euro as currency?</p> <p>C. Sweden should apply for membership of NATO?</p> <p>D. Sweden should campaign for increased free trade across the whole world?</p> <p>E. reduce Swedish aid to the developing countries?</p> <p>F. accept fewer refugees into Sweden</p> <p>G. increase economic support to immigrants so they can maintain their own culture?</p> <p>H. increase labour immigration to Sweden?</p> <p>I. end the Swedish participation in the UN military mission in Afghanistan?</p> |
|--|---|

Question 41

We have put together a couple of views that sometimes appear in the political debate.

SHOW CARD 41

I will read out one such view at a time and would like you to choose one of the responses on the card.

- | | |
|---|-----------------------------------|
| 1 | agree entirely |
| 2 | agree on the whole |
| 3 | disagree on the whole |
| 4 | disagree entirely |
| 8 | <i>DK/does not want to answer</i> |

Do you agree with this view or do you think it is wrong?

- | | |
|-----------------------|---|
| <p>___</p> <p>___</p> | <p>A. Leading banking and industry people will get far too much influence unless society is given the chance to control private business and industry.</p> <p>B. Social reforms in this country have gone so far that the state ought to <u>reduce</u> rather than increase social benefits and support for the citizens.</p> |
|-----------------------|---|

Question 42
 We have also put together a couple of different views you sometimes hear about parties and politics..

SHOW CARD 42

I will read out one such view at a time and would like you to choose one of the responses on the card.

1	agree entirely
2	agree on the whole
3	disagree on the whole
4	disagree entirely
8	<i>DK/does not want to answer</i>

Do you agree with this view or do you think it is wrong?

___ A. The parties are only interested in people's votes, not in what they think

___ B. Those who sit in Parliament making decisions do not pay much attention to the thoughts and views of ordinary people

___ C. There is at least one party that always tries to protect my interests

___ D. You can never trust any of the parties to keep their election promises.

QUESTION 43 NOT ASKED IN STAGE A

Question 44
 On this card I have a list with proposals of different kinds of society some people think we should work towards for the future in Sweden. I would like to know what you think about these proposals. You may answer using the scale on this card.

SHOW CARD 44

ENTER RESPONSE NUMBER. ENTER 98 FOR DK/DOES NOT WANT TO ANSWER

What do you think about the proposal to:

___ A. Work towards a society with more private enterprise and market economy?

___ B. Work towards an environmentally friendly society even if it means little or no economic growth?

___ C. Work towards a society where Christian values are more important?

___ D. Work towards a society with more law and order?

___ E. Work towards a society with more equality between men and women?

___ F. Work towards a society that protects traditional Swedish values?

___ G. Work towards a society that strengthens the position of the family?

___ H. Work towards a multicultural society, with high a level of tolerance towards people from other countries with other religions and lifestyles?

___ I. Work towards a society with more emphasis on internationalism and less of borders between people and countries?

___ J. Work towards a society where the rights of homo-, bi- and transsexuals are strengthened?

___ K. Work towards a society where power is redistributed from men to women?

___ L. Work towards a society where non-profit and voluntary organisations, and voluntary work, is more important?

Question 45

Here are a few more proposals that have appeared in the political debate. What is your view on each of them?

SHOW CARD 45

- 1 very good proposal
- 2 fairly good proposal
- 3 neither good nor bad proposal
- 4 fairly bad proposal
- 5 very bad proposal
- 8 *DK/does not want to answer*

READ OUT PROPOSALS ONE BY ONE

Using the proposals on this card, what is your opinion about the proposal to:

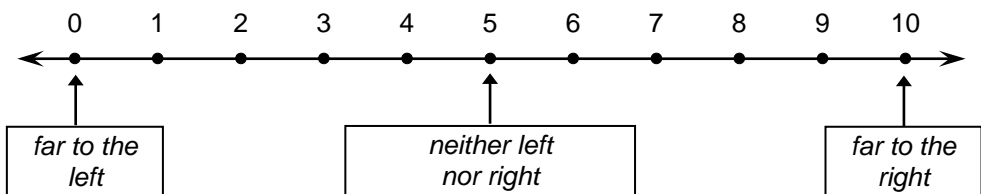
- A. Introduce a six hour working day for all gainfully employed?
- B. Prohibit all forms of pornography?
- C. Introduce mandatory gender quotas to senior posts in central and local government?
- D. Significantly increase the severity of prison sentences for criminals?
- E. Abolish the tax deduction for domestic and domestic-related services?
- F. Increase the old age retirement age?
- G. Make Sweden into a republic?
- H. The number of wolves in Sweden should increase?

Question 46A

The parties are sometimes thought of as being ordered from left to right according to their political position.

SHOW CARD 46

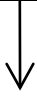

On this card there is a kind of scale. I would like you to place the political parties on the scale.



ASK QUESTIONS BELOW. IF R. HAS NO CONCEPTION OF "LEFT/RIGHT", ENTER 96. ENTER 98 FOR DK/DOES NOT WANT TO ANSWER

We begin with the People's Party Liberals. Where on the scale would you place the People's Party Liberals?

- A. People's Party Liberals?
- B. Social Democrats?
- C. Moderate Party?
- D. Left Party?
- E. Centre Party?
- F. Green Party?
- G. Christian Democrats?
- H. Sweden Democrats?
- I. Feminist Initiative?
- J. Pirate Party?

 	<p>Question 46B Where on the scale would you place yourself?</p> <div style="border: 1px solid black; padding: 5px; margin: 5px 0;"> <p>EXPLAIN - IF NECESSARY - THAT THIS QUESTION CONCERNS RESPONDENT'S OWN POLITICAL OUTLOOK</p> </div> <p><i>Respondent's own position on the left-right scale</i></p>
QUESTION 47 NOT ASKED IN STAGE A	
<p>1 2 3 4 5 8</p>	<p>Question 48 What is your view on the current economic situation in Sweden?</p> <div style="border: 1px solid black; padding: 5px; margin: 5px 0;"> <p>CARD 48. READ OUT RESPONSE ALTERNATIVES.</p> </div> <p>very good fairly good neither good nor bad fairly bad very bad <i>DK/does not want to answer</i></p>
<p>1 3 5 8</p>	<p>Question 49AA Would you say that the Swedish economy has improved, remained the same or deteriorated during the past 12 months?</p> <div style="border: 1px solid black; padding: 5px; margin: 5px 0;"> <p>CARD 49AA</p> </div> <p>improved → 49AB remained the same → 49B deteriorated → 49AC <i>DK/does not want to answer</i> → 49B</p>
<p>1 2 7 8</p>	<p>Question 49AB Has the improvement been minor or major?</p> <div style="border: 1px solid black; padding: 5px; margin: 5px 0;"> <p>IF R. HAS DIFFICULTY CHOOSING FROM THE ALTERNATIVES, TRY TO GET R. TO INDICATE THE ALTERNATIVE TOWARDS WHICH SHE/HE IS LEANING. OTHERWISE TYPE THE RESPONSE VERBATIM IN SPACE FOR "OTHER ANSWER"</p> </div> <p><i>minor</i> <i>major</i> <i>other answer:</i> _____ <i>DK/does not want to answer</i></p>
<p>1 2 7 8</p>	<p>Question 49AC Has the deterioration been minor or major?</p> <div style="border: 1px solid black; padding: 5px; margin: 5px 0;"> <p>SEE INSTRUCTIONS FOR Q49AB</p> </div> <p><i>minor</i> <i>major</i> <i>other answer:</i> _____ <i>DK/does not want to answer</i></p>
<p>1 3 5 8</p>	<p>Question 49BA How do you think the Swedish economy will develop in the next 12 months? Will it improve, remain the same or will it deteriorate?</p> <div style="border: 1px solid black; padding: 5px; margin: 5px 0;"> <p>CARD 49BA</p> </div> <p>improve → 49BB remain the same → 49CA deteriorate → 49BC <i>DK/does not want to answer</i> → 49CA</p>

<p>1 2 7 8</p>	<p>Question 49BB Will the improvement be minor or major?</p> <p style="border: 1px solid black; padding: 2px; text-align: center;">SEE INSTRUCTIONS FOR Q49AB</p> <p><i>minor</i> <i>major</i> <i>other answer:</i> _____ <i>DK/does not want to answer</i></p>
<p>1 2 7 8</p>	<p>Question 49BC Will the deterioration be minor or major?</p> <p style="border: 1px solid black; padding: 2px; text-align: center;">SEE INSTRUCTIONS FOR Q49AB</p> <p><i>minor</i> <i>major</i> <i>other answer:</i> _____ <i>DK/does not want to answer</i></p>
<p>1 3 5 8</p>	<p>Question 49CA If you compare your own economic situation with what it was 12 months ago; has it improved, remained the same or has it deteriorated?</p> <p style="border: 1px solid black; padding: 2px; text-align: center;">CARD 49CA</p> <p>improved _____ → 49CB remained the same _____ → 49D deteriorated _____ → 49CC <i>DK/does not want to answer</i> _____ → 49D</p>
<p>1 2 7 8</p>	<p>Question 49CB Has the improvement been minor or major?</p> <p style="border: 1px solid black; padding: 2px; text-align: center;">SEE INSTRUCTIONS FOR Q49AB</p> <p><i>minor</i> <i>major</i> <i>other answer:</i> _____ <i>DK/does not want to answer</i></p>
<p>1 2 7 8</p>	<p>Question 49CC Has the deterioration been minor or major?</p> <p style="border: 1px solid black; padding: 2px; text-align: center;">SEE INSTRUCTIONS FOR Q49AB</p> <p><i>minor</i> <i>major</i> <i>other answer:</i> _____ <i>DK/does not want to answer</i></p>
<p>1 3 5 8</p>	<p>Question 49DA Looking forward, how do you think your own economic situation will change in the next 12 months? Will it improve, remain the same or will it deteriorate?</p> <p style="border: 1px solid black; padding: 2px; text-align: center;">CARD 49DA</p> <p>improve _____ → 49DB remain the same _____ → 50 deteriorate _____ → 49DC <i>DK/does not want to answer</i> _____ → 50</p>

1 2 7 8	<p>Question 49DB Will the improvement be minor or major?</p> <div style="border: 1px solid black; padding: 2px; width: fit-content;">SEE INSTRUCTIONS FOR Q49AB</div> <p>1 <i>minor</i></p> <p>2 <i>major</i></p> <p>7 <i>other answer:</i>_____</p> <p>8 <i>DK/does not want to answer</i></p>
1 2 7 8	<p>Question 49DC Will the deterioration be minor or major?</p> <div style="border: 1px solid black; padding: 2px; width: fit-content;">SEE INSTRUCTIONS FOR Q49AB</div> <p>1 <i>minor</i></p> <p>2 <i>major</i></p> <p>7 <i>other answer:</i>_____</p> <p>8 <i>DK/does not want to answer</i></p>
8 1 5 8	<p>Question 50 What, in your view, is the most important factor or factors behind the current level of unemployment in Sweden?</p> <p>What factor or factors? <i>issue(s):</i>_____</p> <hr/> <p>8 <i>no opinion/DK/does not want to answer</i> —————→ 51</p> <div style="border: 1px solid black; padding: 2px; width: fit-content; display: inline-block;"> ADDED Q. FOR COMPLETE ANSWERS → </div> <p style="margin-left: 150px;">Is there any further factor you consider of significance for the current levels of unemployment in Sweden?</p> <p>1 <i>yes</i></p> <p>5 <i>no</i> —————→ 51</p> <p>8 <i>DK/does not want to answer</i> —————→ 51</p> <div style="border: 1px solid black; padding: 2px; width: fit-content; margin: 5px auto;"> IF RESPONDENT ANSWERS YES </div> <p>What further factor or factors? <i>issue(s):</i>_____</p> <hr/>
QUESTIONS 48 - 50 ONLY ASKED IN STAGE A	

<p>↓</p> <p>___</p> <p>___</p> <p>___</p> <p>___</p> <p>___</p> <p>___</p> <p>___</p> <p>___</p> <p>___</p> <p>___</p>	<p>Question 51 Here is a list of names of different people. Could you tell me the <u>party</u> each of them belongs to? I begin with Anders Borg?</p> <p style="text-align: center;">SHOW CARD 51</p> <p>READ OUT ONE NAME AT A TIME AND ENTER THE PARTY GIVEN BY RESPONDENT. USE THE CODES TO INDICATE PARTY.</p> <table border="1" style="width: 100%;"> <tr> <td style="width: 50%;">ENTER NUMBER OF THE PARTY R. RESPONDS WITH</td> <td style="width: 50%;"></td> </tr> <tr> <td>1</td> <td>LEFT PARTY</td> </tr> <tr> <td>2</td> <td>SOCIAL DEMOCRATS</td> </tr> <tr> <td>3</td> <td>CENTRE PARTY</td> </tr> <tr> <td>4</td> <td>PEOPLE'S PARTY LIBERALS</td> </tr> <tr> <td>5</td> <td>MODERATE PARTY</td> </tr> <tr> <td>6</td> <td>CHRISTIAN DEMOCRATS</td> </tr> <tr> <td>7</td> <td>GREEN PARTY</td> </tr> <tr> <td>8</td> <td>SWEDEN DEMOCRATS</td> </tr> <tr> <td>9</td> <td>FEMINIST INITIATIVE</td> </tr> <tr> <td>10</td> <td>PIRATE PARTY</td> </tr> <tr> <td>12</td> <td>OTHER PARTY</td> </tr> <tr> <td>98</td> <td>DK/DOES NOT WANT TO ANSWER</td> </tr> </table> <p>A. Anders Borg? (5) B. Fredrick Federley? (3) C. Birgitta Olsson? (4) D. Gunilla Carlsson? (5) E. Leif Pagrotsky? (2) F. Mikaela Valtersson? (7) G. Alice Åström? (1) H. Mats Odell? (6) I. Tomas Östros? (2)</p>	ENTER NUMBER OF THE PARTY R. RESPONDS WITH		1	LEFT PARTY	2	SOCIAL DEMOCRATS	3	CENTRE PARTY	4	PEOPLE'S PARTY LIBERALS	5	MODERATE PARTY	6	CHRISTIAN DEMOCRATS	7	GREEN PARTY	8	SWEDEN DEMOCRATS	9	FEMINIST INITIATIVE	10	PIRATE PARTY	12	OTHER PARTY	98	DK/DOES NOT WANT TO ANSWER
ENTER NUMBER OF THE PARTY R. RESPONDS WITH																											
1	LEFT PARTY																										
2	SOCIAL DEMOCRATS																										
3	CENTRE PARTY																										
4	PEOPLE'S PARTY LIBERALS																										
5	MODERATE PARTY																										
6	CHRISTIAN DEMOCRATS																										
7	GREEN PARTY																										
8	SWEDEN DEMOCRATS																										
9	FEMINIST INITIATIVE																										
10	PIRATE PARTY																										
12	OTHER PARTY																										
98	DK/DOES NOT WANT TO ANSWER																										
<p>↓</p> <p>___</p> <p>___</p> <p>___</p> <p>___</p> <p>___</p> <p>___</p> <p>___</p> <p>___</p>	<p>Question 52 On this card there are a number of statements. Could you say whether each of them is true or false. If you are not certain of the answer, you may say that you do not know whether the statement is true or false.</p> <p style="text-align: center;">SHOW CARD 52</p> <table border="1" style="width: 100%;"> <tr> <td>1</td> <td>true statement</td> </tr> <tr> <td>5</td> <td>false statement</td> </tr> <tr> <td>8</td> <td>DK</td> </tr> <tr> <td>9</td> <td>does not want to answer</td> </tr> </table> <p>READ OUT ONE STATEMENT AT A TIME.</p> <p>A. The sickness benefit from National Insurance is at the moment 90 per cent of the wage/salary from the first day of sick leave? B. The Swedish parliament has 349 members. C. Open unemployment in Sweden is less than 5 per cent. D. The interest rate set by the <i>Riksbank</i> is currently above 4 per cent. E. Spain is a member of the EU. F. During the 2006 – 2010 election period Sweden has had a centre-right four-party government. G. A party must get at least 6 per cent of the votes to get into the Swedish parliament H. School grades may be given in the first semester of year 8 at the earliest. I. Wind power accounts for 20 per cent of the electricity production in Sweden.</p>	1	true statement	5	false statement	8	DK	9	does not want to answer																		
1	true statement																										
5	false statement																										
8	DK																										
9	does not want to answer																										
<p>QUESTIONS 53 – 56 NOT ASKED IN STAGE A</p>																											

FINALLY A FEW QUESTIONS ABOUT YOURSELF

	<p>Question 57A I begin with a few questions about employment and work. To which of the groups on this card do you belong?</p> <p style="text-align: center; border: 1px solid black; padding: 2px;">SHOW CARD 57A</p>
<p>1</p> <p>2</p> <p>5</p> <p>6</p> <p>7</p> <p>8</p> <p>9</p> <p>77</p> <p>98</p>	<p>gainfully employed (also on sick leave or parental leave)</p> <p>work/training in labour market scheme</p> <p>seeking work/unemployed</p> <p>old age pensioner/retired</p> <p>on sickness or disability allowance</p> <p>domestic worker/housewife</p> <p>student</p> <p>other group (state which): _____</p> <p>DK/does not want to answer</p>
<p>1</p> <p>5</p> <p>9</p>	<p>Question 57B Have you previously been gainfully employed?</p> <p>yes</p> <p>no =====→ 59A</p> <p>does not want to answer =====→ 59A</p>
	<p>Question 57C What <u>is/was</u> your occupation?</p> <div style="border: 1px solid black; padding: 5px; display: inline-block; margin-bottom: 10px;"> ADDED QUESTION TO CLARIFY OCCUPATION/TYPE OF WORK </div> <p style="margin-left: 20px;">→ What type of work <u>do/did</u> you mainly do?</p> <p>occupation/work: _____</p> <div style="border: 1px solid black; padding: 5px; margin-top: 10px;"> THE QUESTION IS ASKED BOTH TO WORK ACTIVE AS WELL AS RESPONDENTS WHO HAVE BEEN WORK ACTIVE IN THE PAST. IF R. HAS BEEN ACTIVE IN THE PAST, USE THE WORDS "WAS" AND "DID" </div>
<p>1</p> <p>2</p> <p>3</p> <p>9</p>	<p>Question 57D On average, how many hours <u>do/did</u> you work per week?</p> <p style="text-align: center; border: 1px solid black; padding: 2px;">SHOW CARD 57D</p> <p>full time</p> <p>part time, at least 15 hours a week</p> <p>part time, less than 15 hours a week</p> <p>does not want to answer</p>
	<p>Question 57E What <u>is/was</u> the main activity at your workplace?</p> <p>activity: _____</p>

	<p>Question 57F Could you tell me which of the following occupational groups you <u>belong/belonged</u> to?</p> <p style="border: 1px solid black; padding: 2px; text-align: center;"><i>THE PHRASE "YOU BELONGED TO" IS USED IF R. HAS BEEN WORK ACTIVE IN THE PAST. THE QUESTION SHOULD THEN REFER TO R'S MOST RECENT OCCUPATION.</i></p> <p style="text-align: center; border: 1px solid black; padding: 5px; margin: 10px 0;">SHOW CARD 57F</p> <table style="width: 100%; border-collapse: collapse;"> <tr> <td style="width: 5%; text-align: center; vertical-align: top;">1</td> <td style="border: 1px solid black; padding: 2px;">salaried employee</td> <td rowspan="3" style="width: 5%; text-align: center; vertical-align: middle;">→</td> <td rowspan="3" style="width: 5%;"></td> <td rowspan="3" style="width: 5%;"></td> </tr> <tr> <td style="text-align: center; vertical-align: top;">2</td> <td style="border: 1px solid black; padding: 2px;">salaried employee with supervisory responsibility</td> </tr> <tr> <td style="text-align: center; vertical-align: top;">3</td> <td style="border: 1px solid black; padding: 2px;">salaried employee at managerial level</td> </tr> <tr> <td style="text-align: center; vertical-align: top;">4</td> <td style="border: 1px solid black; padding: 2px;">worker</td> <td rowspan="2" style="text-align: center; vertical-align: middle;">→</td> <td rowspan="2" style="text-align: center; vertical-align: middle;">58</td> <td rowspan="2" style="width: 5%;"></td> </tr> <tr> <td style="text-align: center; vertical-align: top;">5</td> <td style="border: 1px solid black; padding: 2px;">worker with supervisory responsibility</td> </tr> <tr> <td style="text-align: center; vertical-align: top;">7</td> <td style="border: 1px solid black; padding: 2px;">farmer: no employees</td> <td rowspan="2" style="text-align: center; vertical-align: middle;">→</td> <td rowspan="2" style="text-align: center; vertical-align: middle;">58</td> <td rowspan="2" style="width: 5%;"></td> </tr> <tr> <td style="text-align: center; vertical-align: top;">8</td> <td style="border: 1px solid black; padding: 2px;">farmer: one or more employees</td> </tr> <tr> <td style="text-align: center; vertical-align: top;">9</td> <td style="border: 1px solid black; padding: 2px;">self-employed: no employees</td> <td rowspan="3" style="text-align: center; vertical-align: middle;">→</td> <td rowspan="3" style="text-align: center; vertical-align: middle;">58</td> <td rowspan="3" style="width: 5%;"></td> </tr> <tr> <td style="text-align: center; vertical-align: top;">10</td> <td style="border: 1px solid black; padding: 2px;">self-employed: 1-9 employees</td> </tr> <tr> <td style="text-align: center; vertical-align: top;">11</td> <td style="border: 1px solid black; padding: 2px;">self-employed: 10 or more employees <i>(self-employed includes business owners)</i></td> </tr> <tr> <td style="text-align: center; vertical-align: top;">77</td> <td style="padding: 2px;"><i>other answer: _____</i></td> <td colspan="3"></td> </tr> <tr> <td style="text-align: center; vertical-align: top;">98</td> <td style="padding: 2px;"><i>DK/does not want to answer</i></td> <td colspan="3"></td> </tr> </table>	1	salaried employee	→			2	salaried employee with supervisory responsibility	3	salaried employee at managerial level	4	worker	→	58		5	worker with supervisory responsibility	7	farmer: no employees	→	58		8	farmer: one or more employees	9	self-employed: no employees	→	58		10	self-employed: 1-9 employees	11	self-employed: 10 or more employees <i>(self-employed includes business owners)</i>	77	<i>other answer: _____</i>				98	<i>DK/does not want to answer</i>			
1	salaried employee	→																																									
2	salaried employee with supervisory responsibility																																										
3	salaried employee at managerial level																																										
4	worker	→	58																																								
5	worker with supervisory responsibility																																										
7	farmer: no employees	→	58																																								
8	farmer: one or more employees																																										
9	self-employed: no employees	→	58																																								
10	self-employed: 1-9 employees																																										
11	self-employed: 10 or more employees <i>(self-employed includes business owners)</i>																																										
77	<i>other answer: _____</i>																																										
98	<i>DK/does not want to answer</i>																																										
	<p>Question 57G Are/were you employed by the state (central government), local government/council, regional government/council or by a private employer?</p> <table style="width: 100%; border-collapse: collapse;"> <tr> <td style="width: 5%; text-align: center; vertical-align: top;">1</td> <td style="padding: 2px;"><i>state</i></td> </tr> <tr> <td style="text-align: center; vertical-align: top;">2</td> <td style="padding: 2px;"><i>local government/council</i></td> </tr> <tr> <td style="text-align: center; vertical-align: top;">3</td> <td style="padding: 2px;"><i>regional government/council</i></td> </tr> <tr> <td style="text-align: center; vertical-align: top;">4</td> <td style="padding: 2px;"><i>private</i></td> </tr> <tr> <td style="text-align: center; vertical-align: top;">7</td> <td style="padding: 2px;"><i>other answer: _____</i></td> </tr> <tr> <td style="text-align: center; vertical-align: top;">9</td> <td style="padding: 2px;"><i>does not want to answer</i></td> </tr> </table>	1	<i>state</i>	2	<i>local government/council</i>	3	<i>regional government/council</i>	4	<i>private</i>	7	<i>other answer: _____</i>	9	<i>does not want to answer</i>																														
1	<i>state</i>																																										
2	<i>local government/council</i>																																										
3	<i>regional government/council</i>																																										
4	<i>private</i>																																										
7	<i>other answer: _____</i>																																										
9	<i>does not want to answer</i>																																										
	<p>Question 58 In your own judgement, how big is the risk that you will become unemployed in the next 12 months?</p> <p style="border: 1px solid black; padding: 5px; text-align: center; margin: 10px 0;"><i>N.B. QUESTION ONLY ASKED TO THE GAINFULLY EMPLOYED. SHOW CARD 58 AND READ OUT THE RESPONSE ALTERNATIVES</i></p> <table style="width: 100%; border-collapse: collapse;"> <tr> <td style="width: 5%; text-align: center; vertical-align: top;">1</td> <td style="padding: 2px;">very big</td> </tr> <tr> <td style="text-align: center; vertical-align: top;">2</td> <td style="padding: 2px;">fairly big</td> </tr> <tr> <td style="text-align: center; vertical-align: top;">3</td> <td style="padding: 2px;">neither big nor small</td> </tr> <tr> <td style="text-align: center; vertical-align: top;">4</td> <td style="padding: 2px;">fairly small</td> </tr> <tr> <td style="text-align: center; vertical-align: top;">5</td> <td style="padding: 2px;">very small</td> </tr> <tr> <td style="text-align: center; vertical-align: top;">8</td> <td style="padding: 2px;"><i>DK/does not want to answer</i></td> </tr> </table>	1	very big	2	fairly big	3	neither big nor small	4	fairly small	5	very small	8	<i>DK/does not want to answer</i>																														
1	very big																																										
2	fairly big																																										
3	neither big nor small																																										
4	fairly small																																										
5	very small																																										
8	<i>DK/does not want to answer</i>																																										

ADDED QUESTIONS FOR "EMPLOYEES"

are/were you permanently employed?

1 yes
 5 no
 7 other answer: _____
 8 DK/does not want to answer

Do/did you have you own business besides your employment?

1 yes
 5 no
 7 other answer: _____
 8 DK/does not want to answer

Do/did you regularly work with something else besides your regular employment?

1 yes
 5 no
 7 other answer: _____
 8 DK/does not want to answer

	<p>Question 59A On this card there are a number of different problems that some people have encountered on the labour market. Have you <u>personally during the past year</u> encountered any of these problems?</p> <div style="border: 1px solid black; padding: 5px; text-align: center;"> <p>CARD 59A. MORE THAN ONE RESPONSE ALTERNATIVE POSSIBLE</p> </div> <p>1 yes 5 no 8 DK/does not want to answer</p> <p style="text-align: right;">59B 59B</p> <div style="border: 1px solid black; padding: 5px; text-align: center;"> <p>IF YES</p> </div> <p>Which of these problems have you encountered?</p> <p>1 on one or several occasions during the past 12 months looked for work, but without success 2 tried to get a full time job, but only got a part time job 3 been forced to take a job below my qualifications 4 been made redundant, but got a new job within three months 5 been made redundant, and been unemployed for more than three months 7 received sickness or disability allowance, partly for labour market reasons 8 worked or received training in a labour market scheme 9 encountered problems in my capacity as self-employed or business owner (<i>state which</i>): _____ _____</p> <p>77 encountered some other problem on the labour market (<i>state which</i>): _____ _____</p> <p>98 DK/does not want to answer</p>
	<p>Question 59B Has someone else in your household during the past year encountered any of these problems?</p> <p>1 yes 5 no 7 other answer: _____ 8 DK/does not want to answer</p>
	<p>Question 60A Are you currently studying for a degree or a vocational qualification?</p> <div style="border: 1px solid black; padding: 5px; text-align: center;"> <p>NB! RESPONDENT. WHO ANSWERED "STUDENT" ON Q. 57A SHOULD ONLY BE ASKED THE ADDED QUESTION</p> </div> <p>1 yes 5 no 9 does not want to answer</p> <p style="text-align: right;">60B 60B</p> <div style="border: 1px solid black; padding: 5px; text-align: center;"> <p>ADDED QUESTION IF RESPONDENT ANSWERS "YES"</p> </div> <p>Are you studying full time or part time?</p> <p>1 yes, full time 5 yes, part time 7 other answer: _____ 9 does not want to answer</p>

Question 60B	
What type of education do you have? What are you studying?	
<div style="border: 1px solid black; padding: 5px; display: inline-block; margin-right: 20px;"> ADDED QUESTION FOR COMPLETE ANSWERS </div> → Do you have any other practical or theoretical education?	
1	<u>not completed primary/comprehensive, or equivalent, school</u>
2	<u>primary/comprehensive school or corresponding compulsory school</u> <i>only 6 or 7 year primary school (old system) or 8 or 9 year comprehensive school</i>
3	<u>vocational school</u> <i>yrkes- lärlingsskola, verkstadsskola, 1-årig handelsutbildning</i>
4	<u>secondary school</u> <i>2 year secondary school (old system), total: 9 years of education</i>
5	<u>secondary/high school</u> <i>2 year secondary school (current system), total: 11 years of education</i>
6	<u>upper secondary/high school</u> <i>3 or 4 year secondary school (current system), total: 12 or 13 years of education. Degree not completed; studying at this level</i>
7	<u>upper secondary/high school</u> <i>as above, but degree completed</i>
8	<u>further education, but not university</u> <i>degree not completed; studying at this level</i>
9	<u>further education, but not university</u> <i>as above, but degree completed</i>
10	<u>higher education/university</u> <i>degree not completed; studying at this level</i>
11	<u>higher education/university</u> <i>undergraduate degree completed; not taken postgraduate study</i>
12	<u>higher education/university</u> <i>postgraduate/doctoral degree; studying at this level or degree completed</i>
77	<i>other education: _____</i>
98	<i>DK/does not want to answer</i>
IF MORE THAN ONE OF ALTERNATIVES 1-12 ARE APPLICABLE, ENTER ONLY THE ONE WITH THE HIGHEST NUMBER. WE ARE ONLY INTERESTED IN THE HIGHEST LEVEL AT WHICH R. IS STUDYING/HAS STUDIED. IF IN DOUBT, ENTER R'S RESPONSE NEXT TO "OTHER EDUCATION".	
Question 61	
Are you a member of any trade union, organisation for business owners or any other professional, vocational or business organisation or association?	
1	<i>yes</i>
5	<i>no</i> _____ → 62A
8	<i>does not want to answer</i> _____ → 62A
<div style="border: 1px solid black; padding: 5px; display: inline-block; margin-right: 20px;"> ADDED QUESTION IF R ANSWERS YES </div> → Of which organisation are you a member?	
<i>name of organisation: _____</i>	
DO NOT ENTER ABBREVIATIONS, BUT THE WHOLE NAME OF THE ORGANISATION. IF R. MENTIONS THE NAME OF A PEAK LEVEL TRADE UNION CONFEDERATION (LO, TCO OR SACO), ASK FOR AND ENTER THE NAME OF THE INDIVIDUAL UNION. FARMERS ORGANISATION TO BE TREATED AS BUSINESS ASSOCIATION.	

<p>1 5 8</p>	<p>Question 62A Are you a member of a political party or any other political organisation?</p> <p>yes no does not want to answer</p> <p>_____ → 63A _____ → 63A</p> <p>ADDED QUESTION IF R ANSWERS YES → Of which party or political organisation are you a member?</p> <p>party: _____ political organisation: _____</p> <p>ENTER THE NAMES OF THE PARTIES/ORGANISATIONS MENTIONED BY R. MORE THAN ONE ORGANISATION IS POSSIBLE.</p>
<p>1 5 7 8</p>	<p>Question 62B Are you an active member of (...PARTY/POLITICAL ORGANISATION)? By active I mean attending meetings a few times a year.</p> <p>yes, active no, not active other answer: _____ DK/does not want to answer</p>
<p>1 2 3 4 5 6 7 8</p>	<p>Question 63A How often do you usually attend services or meetings in the Church of Sweden, a Free Church or any other church or denomination?</p> <p>SHOW CARD 63A OCH READ OUT THE ALTERNATIVES</p> <p>RADIO, TV, HOSPITAL SERVICES, ETC., ALSO TO BE TREATED AS SERVICES</p> <p>never once a year/less often 2-11 times a year once a month 2 or more times a month every week other answer: _____ DK/does not want to answer</p> <p>_____ → 64 _____ → 64</p>
<p>1 2 3 7 8</p>	<p>Question 63B Do you usually go to the Church of Sweden, to a Free Church or to any other church or religious organisation?</p> <p>Church of Sweden other church (state which): _____ other religious organisation (state which): _____ other answer: _____ DK/does not want to answer</p>

<p>1 2 3 4 7 8</p>	<p>Question 64 Generally speaking, how religious would you say you are?</p> <p style="text-align: center;">SHOW CARD 64</p> <p>1 have no religious faith 2 not particularly religious 3 fairly religious 4 very religious 7 <i>other answer:</i> _____ 8 <i>DK/does not want to answer</i></p>
<p>√</p> <p>___</p> <p>98</p>	<p>Question 65A Now follow two questions about your health. How would you assess your personal health? You may answer using the scale on this card.</p> <p style="text-align: center;">SHOW CARD 65A</p> <p style="text-align: center;"> </p> <p>ENTER RESPONSE NUMBERS. ENTER 98 FOR DK/DOES NOT WANT TO ANSWER</p> <p><i>Respondent's own assessment of his/her own health</i> <i>DK/does not want to answer</i></p>
	<p style="text-align: center;">QUESTION NOT TO BE ASKED TO PERSONS WHO TO Q57A HAVE ANSWERED THAT THEY ARE OLD AGE PENSIONERS</p> <p>Question 65B Have you been on sick leave from work at any time during the past 12 months?</p> <p style="text-align: center;">SHOW CARD 65B AND READ OUT ALTERNATIVES</p> <p>1 yes, altogether between a few days and 1 week 2 yes, altogether between 1 week and 1 month 3 yes, altogether between 1 and 6 months 4 yes, altogether between 6 and 12 months 5 yes, for more than 12 months 6 no, not been on sick leave at any time in the past 12 months 7 <i>other answer:</i> _____ 8 <i>DK/does not want to answer</i></p>
<p>1 2 3 4 7 9</p>	<p>Question 66 Concerning your marital status, which of the designations on this card describes your situation most adequately?</p> <p style="text-align: center;">SHOW CARD 66</p> <p>1 married/living permanently with partner 2 single: widowed 3 single: divorced 4 single: never married 7 <i>other answer:</i> _____ 9 <i>does not want to answer</i></p>

<p>1 2 3 4 5 7 8</p>	<p>Question 67 If you were to describe your current home, which of the following categories would you consider as the most appropriate?</p> <p style="border: 1px solid black; padding: 2px; text-align: center;"><i>SHOW CARD 67 AND READ OUT ALTERNATIVES</i></p> <p>working class home white collar middle class home higher middle class home/academic home farming home business owning home <i>other answer:</i> _____ <i>DK/does not want to answer</i></p>
<p>77 98</p>	<p>Question 68A How many persons are included in your household?</p> <p style="border: 1px solid black; padding: 2px; text-align: center;"><i>LODGERS AND DOMESTIC STAFFSERVANTS/HELPERS NOT TO BE TREATED AS MEMBERS OF HOUSESEHOLD</i></p> <p><i>number of persons:</i> _____ <i>other answer:</i> _____ <i>DK/does not want to answer</i></p>
<p>1 2 7 8</p>	<p>Question 68B Does your household include children aged below 18?</p> <p style="border: 1px solid black; padding: 2px; text-align: center;"><i>IF R. ANSWERS YES, ASK FOR THE AGE AND GENDER OF EACH CHILD AND ENTER THE DETAILS</i></p> <p>yes no <i>other answer:</i> _____ <i>does not want to answer</i></p> <p><i>gender and age of child/ren:</i> _____ _____</p>
QUESTION 69 NOT ASKED IN STAGE A	
<p>1 2 3 4 5 6 7 77 98</p>	<p>Question 70A Where did <u>you</u> for the most part live as a child? You may answer using the alternatives on this card.</p> <p style="border: 1px solid black; padding: 2px; text-align: center;"><i>SHOW CARD 70 AND READ OUT THE ALTERNATIVES</i></p> <p>pure countryside in Sweden built up area in Sweden town or city (except three cities below) in Sweden Stockholm, Göteborg or Malmö other Nordic (Scandinavian) country other country in Europe outside the Nordic region country outside Europe <i>other answer:</i> _____ <i>DK/does not want to answer</i></p>

<p>1 2 3 4 5 6 7 77 98</p>	<p>Question 70B Where did your <u>father</u> for the most part live as a child? You may answer using the alternatives on this card.</p> <p style="text-align: center;">SHOW CARD 70 AND READ OUT THE ALTERNATIVES</p> <p>1 pure countryside in Sweden 2 built up area in Sweden 3 town or city (except three cities below) in Sweden 4 Stockholm, Göteborg or Malmö 5 other Nordic (Scandinavian) country 6 other country in Europe outside the Nordic region 7 country outside Europe 77 <i>other answer:</i> _____ 98 <i>DK/does not want to answer</i></p> <p style="text-align: right; border: 1px solid black; padding: 5px;"><i>OTHER PERSON IN THE ROLE OF FATHER ALSO TO BE TREATED AS FATHER</i></p>
<p>1 2 3 4 5 6 7 77 98</p>	<p>Question 70C Where did your <u>mother</u> for the most part live as a child? You may answer using the alternatives on this card.</p> <p style="text-align: center;">SHOW CARD 70 AND READ OUT THE ALTERNATIVES</p> <p>1 pure countryside in Sweden 2 built up area in Sweden 3 town or city (except three cities below) in Sweden 4 Stockholm, Göteborg or Malmö 5 other Nordic (Scandinavian) country 6 other country in Europe outside the Nordic region 7 country outside Europe 77 <i>other answer:</i> _____ 98 <i>DK/does not want to answer</i></p> <p style="text-align: right; border: 1px solid black; padding: 5px;"><i>OTHER PERSON IN THE ROLE OF MOTHER ALSO TO BE TREATED AS MOTHER</i></p>
<p>1 2 3 5 7 8</p>	<p>Question 71 Would you be able to read a brief text in English, for example a newspaper article?</p> <p style="text-align: center;">SHOW CARD 71 AND READ OUT THE ALTERNATIVES</p> <p>1 yes, without difficulty 2 yes, with some difficulty 3 yes, with great difficulty 5 no 7 <i>other answer:</i> _____ 8 <i>vet inte vill ej svara</i></p>
<p>1 2 3 4 7</p>	<p>Question 72A <u>Respondent's current home</u> 1 <i>farm or isolated countryside house</i> 2 <i>detached or row/terraced house in residential area</i> 3 <i>flat in high rise area</i> 4 <i>flat (not in high rise area)</i> 7 <i>other type of residence:</i> _____</p>
<p>1 2 7 8</p>	<p>Question 72B Do you, or someone else in your household, own or rent the property where you currently live?</p> <p>1 <i>rents the property</i> 2 <i>owns the property (including membership of property association, 'bostadsrätt')</i> 7 <i>other answer:</i> _____ 8 <i>does not want to answer</i></p>

INTERVIEWER'S NOTES AFTER COMPLETED INTERVIEW:

Where does the Respondent live??

- 1 pure countryside
- 2 small town or village
- 3 suburb of large town or city
- 4 large town or city
- 7 other notes _____

Duration of interview?

minutes: _____

Respondent wishes to receive "ELECTION STUDY REPORT 2010".