

SAR

Society for Artistic Research

SAR

RC – Key Figures:

- Around 28.0000 registered users – of these approx. 14.000 full users;
- Six Peer-reviewed Journals – Around 35 Institutional Portals
- Close to 5.000 publicly available expositions;
- 82.000 images uploaded / 10.000 videos / 6.000 audio files / 8.000 pdf's;
- Over the last 12 months: 2.000.000 video playbacks and 100.000 audio recordings played;
- Visitors on three of the journals: JAR 525.000 / Sonic Studies 667.000 / VIS 229.000;
- Visitors on some for the most active institutional portals: KC 700.000 / NMH 122.000 / KMD 75.000 / NARP 37.000.

World-wide, the largest presentation platform towards the international Artistic Research Community – both for institutions and for individuals!

Peer Reviewed Journal Portals:

- JAR – Journal for Artistic Research – Published by SAR;
- RUUKKU – Published jointly by the Finnish HAEIs;
- Journal for Sonic Studies – Published by ACPA, Leiden University;
- VIS – Published jointly by SKH and NARP;
- HUB – Published by Porto University.
- ArteActa – Published by AMU, Prague

Time-limited Research Project Portals:

- Jointly by HAEIs in Germany, Hungary, Italy & Latvia;
- Jointly by HAEIs in UK;
- Jointly by HAEIs in Portugal.

RC - An Enhanced/Rich Media Platform to serve the AR Community:

RC enables artists to deviate from the standard format of journal articles and/or research repositories because:

- Images and sounds are not subordinate to, but fundamentally on par with the text;
- Of the opportunity provided to break out of the linear narrative structure;
- It supports a continuous (and collaborative) research activity from documenting research processes and initial outcomes to fully elaborated publications.

To provide this, the RC has been created and further developed to present artistic research, art works & artistic practices through *Expositions*.

It also enables artists/researchers/teachers/students to communicate within the system on artistic challenges without being publicly exposed when developing the research/practice/work.

RC – Key Features as Enhanced Documentation and Publication Platform:

- More than a Media Archive, as Expositions are **Context Driven**;
- Enhanced/Flexible Rich Media Formats;
- Several Exposition Editors/Modules:
 - Graphic Editor / Block Editor (responsive on portable devices);
- Real-time Collaborative Editing, Imbedded Referencing Tool and other modes for Networking (Groups);
- Expositions can be made publicly available or permanently published (and duplicated by the creator).
- Open Source;
- Provides Metadata (also for external harvesting) and DOIs;
- Creator/Portal decides on how to configure the re-use of different parts of the presented material (Intellectual Ownership/Copyright settings);
- Platform Widely Internationally Visited;

- **KTH – Presentation RC Examples:**

- Research Catalogue Mainpage

*Left Column presents publicly available **Work in Progress** / Centre Column permanently **Published Expositions with DOIs** / Right Column present **SARA Announcements***

<https://www.researchcatalogue.net/>

- Stacy Sacks - luxurious migrant // performing whiteness – 2020

<https://www.researchcatalogue.net/view/394964/394965>

- Elisabeth Laasonen Belgrano, 'ELISABETH LAASONEN BELGRANO - PORTFOLIO', Research Catalogue (2024)

<https://www.researchcatalogue.net/view/378762/430811>

- Ellen Kristine Ugelvik, Io Sivertsen - Puppets at the piano - Norwegian Academy of Music, 9 (2024)

<https://www.researchcatalogue.net/view/2251090/2251091>

- Soren Thilo Funder, 'Oceanic Horror or How to Survive the Night in the Haunted Mansion of Absolute Capitalism', Faculty of Fine Art, Music and Design, University of Bergen, 7 (2024)

<https://www.researchcatalogue.net/view/1955415/1955416>

- Andreas Berchtold, 'In circles leading on – folkdance, a choreographic intersection', VIS - Nordic Journal for Artistic Research, 8 (2022)

<https://www.researchcatalogue.net/view/1571956/1595564>

- Heini Nieminen, 'Lintupäiväkirja', Research Catalogue (2024)

<https://www.researchcatalogue.net/view/2360653/2756996>

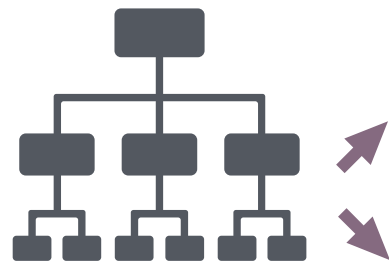
- Heini Nieminen: Example on how RC Personal Repository Media Set may be organized and presented using the exposition format (2024)

<https://map.rcdata.org/#/exposition?id=2360653>

Artistic Practice

Personal Media Repository

Organise / Navigate
Manage / Share

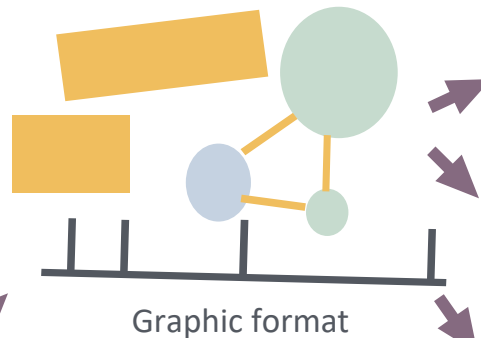


Exposition of Media Set w/DOI

Research Catalogue

Create Exposition

Contextualise & Reflect
Structure & Display
Collaborate



Graphic format



Block format

Process Exposition



Share

Peer-review by
Journal / Portal

Review for
Examination

Dissemination



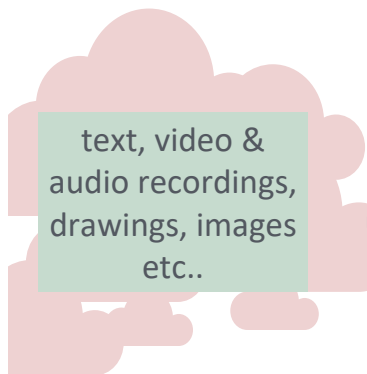
Pre-Publishing
Internal Portal

Publish with DOI
Inst. Repository

Archive

Self-Publishing

Export



text, video & audio recordings,
drawings, images
etc..

Artefact /
Artistic Result

RC – Features for Portal Partners:

1. The RC as an institutional publication and dissemination platform;
2. The RC as institutional archive/repository;
3. The RC for research documentation and collaborative workspace;
4. The RC as internal teaching/learning/examination platform;
5. The RC as research managing tool (e.g. application system).
6. RC as conference organiser (website/submissions/programme)

The RC as Institutional Archive / Repository:

- Archive/documentation of data, files, works, research, events, projects etc.;
- Profile pages for the individual researcher;
- Rich media repositories for individuals;
- Metadata and DOIs may be harvested;
- Can be compatible with national/local research databases;
- Can be referenced (when an Exposition is *Published*);
- Expositions can be exported;
- Sustainable and Robust.

The RC as Institutional Publication Platform:

- Several options for publication: Serial formats, Thematic formats, Student Graduation Presentations, PhD Final Outcomes (Thesis), Journal;
- Publication policies (including copyrights and open data) entirely decided and controlled by the institution;
- Options for externally submitted material (i.g. alumni / international partners);
- Management of submissions, including inter-active peer review and assessment processes within the system.

Portal Partners are also offered the option for a second **Internal Portal** for:

- Teaching / Learning;
- Create Groups for Students / Courses / Projects /Research Clusters;
- On-line Events / Presentations / Exhibitions;
- Closed Supervision / Peer Review / Assessment / Examination Procedures:
- Archiving/Documentation of Exam Outcomes;
- Application Management:
Research Funding / Conference Submissions / Study Programme Applicants.
- On demand, we can create the same joint log-in procedure as the institution use for other standard applications.

RC – For Individual Researchers /Students:

- Individual Profile Pages;
- Personal Media Repository;
- Research Project Notations/Documentations;
- Creating Expositions – Different Choice of Editors Available;
- Inviting Co-Author(s) (optional);
- Inviting Contributor (s) for Proof-Reading etc. (optional);
- Inviting for External View / Comments – by private link (optional);
- Public Display of Research Work-in-Progress;
- Presentations of Research Projects, PhD and MA Final Result Outcomes;
- Publishing Options through Institutional Portals, Journals or Self-publishing

How have this been achieved:

- Constructed on needs and requests from the artistic research community;
- Joint Academic Venture between SAR and approx. thirty-five Institutional Portal Partners;
- Non-Profit Organisational Set-up – No Commercial Interests;
- Based on Open Source;
- Continuously Maintained and Developed from 2010 onwards;
- Agreement with the Royal Institute of Technology (KTH), Stockholm to host the RC Software and Data;
- Investment of approx. € 1.100.000.

Society for Artistic Research - SAR

- Established 2010 – To foster artistic research:
- *To nurture, connect and disseminate artistic research as specific practices of creating knowledge and insight.*
- Non-profit organisation with individual and institutional memberships & Portal Partners;
- Owns and operates the **Research Catalogue** – RC;
- Publishes the online **Journal for Artistic Research** – JAR;
- **Annual Conferences**
(Bern – Graz – Stockholm – London – The Hague – Helsinki – Plymouth – Zurich – [Bergen] – Vienna – Weimar – Trondheim – Tillburg – Porto) ;
- **Annual RC Exposition Prize**;
- **Announcement Service** (SARA);.
- **Special Interest Groups** (SIGs) ;
- **Advocating better recognition of artistic research**, in co-operation with ELIA, AEC Select, Cumulus and others: **The Vienna Declaration on Artistic Research / Proposed Amendments to the Frascati Manual**,

SAR/RC - Infrastructure:

- Society for Artistic Research (seated in Zürich, Switzerland; Back Office in Amsterdam);
- Non-Profit Member Organisation: Institutional and Individual Members;
- Annual General Assembly and seven members Executive Board;
- SAR Executive Officer (Bergen);
- RC Data hosted at Royal Institute of Technology (KTH), Stockholm;
- Software Development: Karlsruhe;
- RC Monitoring Group and RC Managing Officers (Utrecht, Helsinki, Graz);
- RC Helpdesk: support@researchcatalogue.net (Berlin);
- Regular RC Portal Partners Thematic Seminars and Meetings;
- RC Investment 2010-2023: Approx. € 1.100.000;
- More than 28.000 RC Registered Users
- Close to 5.000 Publicly Available Artistic Research Outputs (Expositions)