

Data Champions at LTU

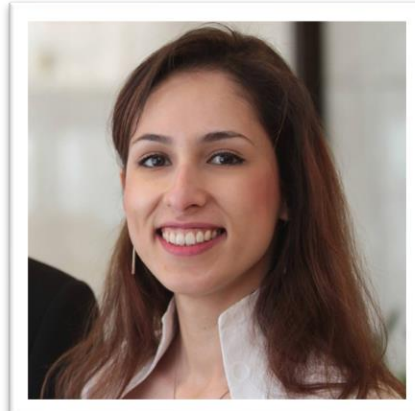
SND's Network Meeting (2024-10-17)



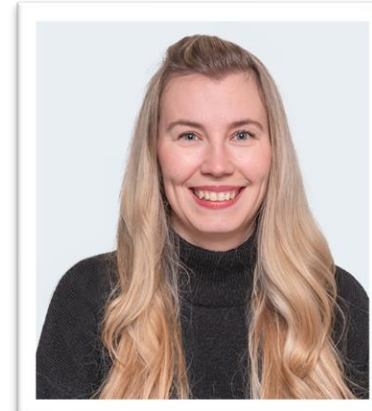
Data Access Unit (DAU)



Sofi Larsson
Librarian



Parvaneh Westerlund, PhD
Research Data
Coordinator

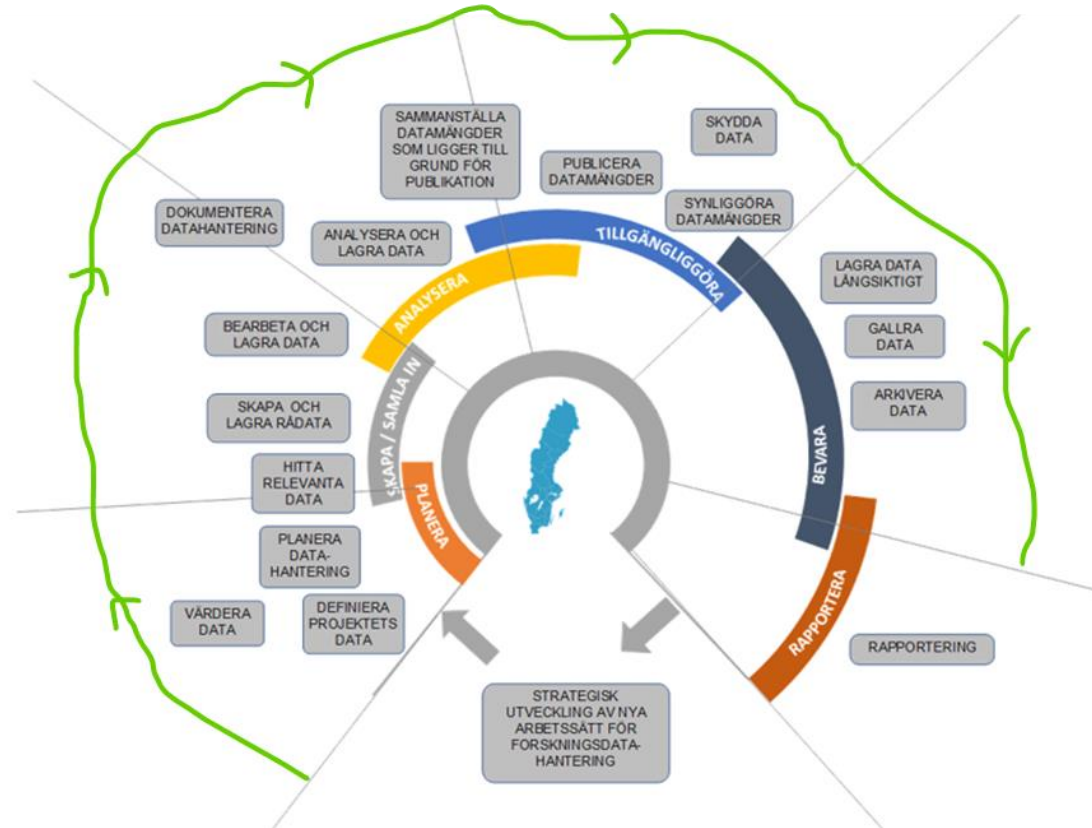


Johanna Cinber
Librarian



Milijana Deric, PhD
Research Data
Coordinator

The Capability Map of Research Data



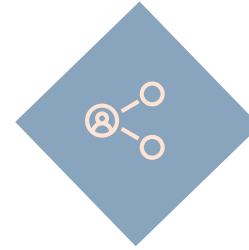
Project Objectives – Increasing:



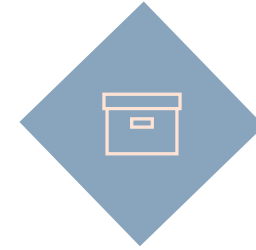
RDM Knowledge
and Competencies



LTU Drive
Utilization Rate



Publishing
Research Data

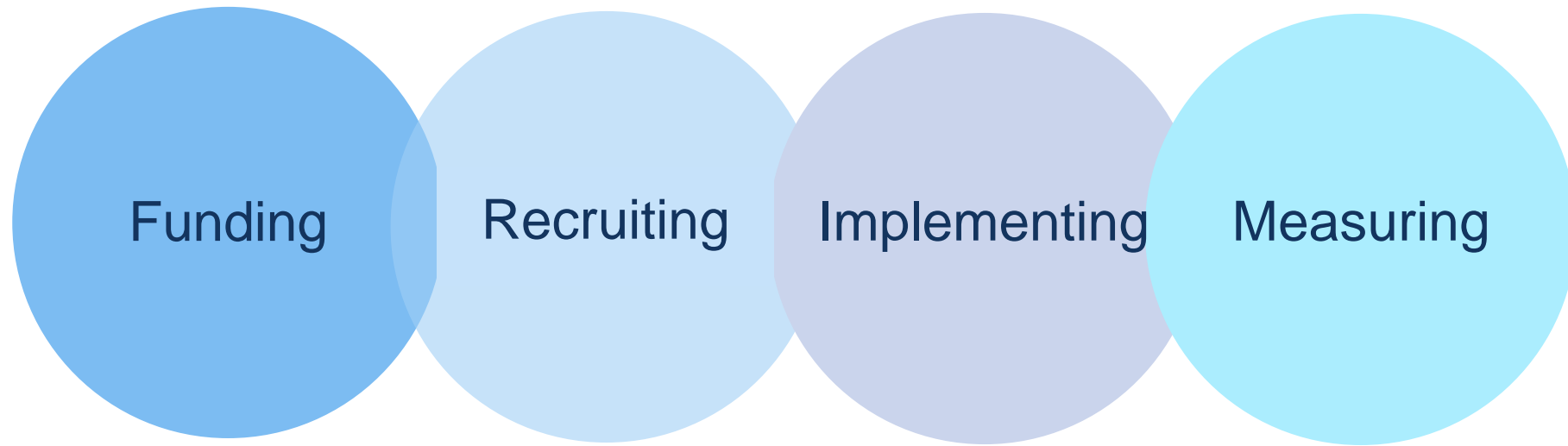


Archiving
Research Data

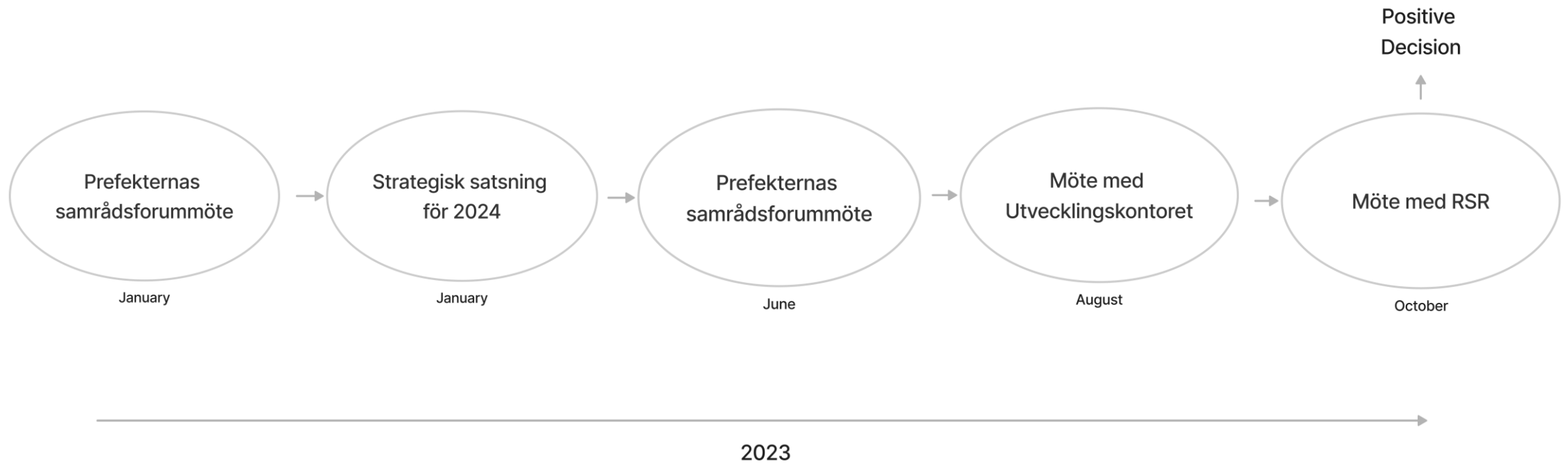
Data Champions Project - Purpose

To provide a network of researchers at LTU who will support their colleagues and departments in the transition to open and FAIR research data

Project Phases



Funding



Recruiting

Method: Open call, Advertising, Dialog with prefects, DAU's recommendations + Interviewing



Strategic Data Champions

Criteria: \geq Assistant lecturers, Supervising PhD students, Leading research project

Scope: 5% (2h/week)



Operative Data Champions

Criteria: \geq PhD student, Research involvement, Publications, Personal qualities

Scope: 15% (6h/week)

Recruiting

Open call advertised on:

- Research web page
- PhD students web page and newsletter
- Institutional mailing lists
- Grants Office newsletter



Become a Data Champion at LTU

Apply Today!

Who are Data Champions?
Data Champions are researchers who promote good research data management (RDM) practices, open research data, and FAIR principles. As a Data Champion at Luleå University of Technology, you will support your colleagues and PhD students in data processing, storage, and sharing.

Who can become Data Champion at LTU?
Any researcher permanently employed at Luleå University of Technology can apply to become a Data Champion. You do not need to be an expert in RDM as you will be trained on this matter. We invite researchers from all five departments and research areas represented at LTU who are eager to work with the data. This is a paid assignment and there are ten vacancies (two from each department).

What will be my responsibilities?
It will be required to share your knowledge and experience with your colleagues and PhD students, to cooperate and communicate with other Data Champions and DAU (Data Access Unit), and to deliver subject-specific workshops/lectures on data handling in your research area.

What benefits will I get?
You will get the opportunity to enjoy numerous benefits, for example to:

- Expand your network by meeting other Data Champions who are also interested in RDM
- Increase your visibility by publishing your profile on the Luleå University of Technology Data Champions webpage
- Increase your impact by influencing RDM training topics
- Boost your CV

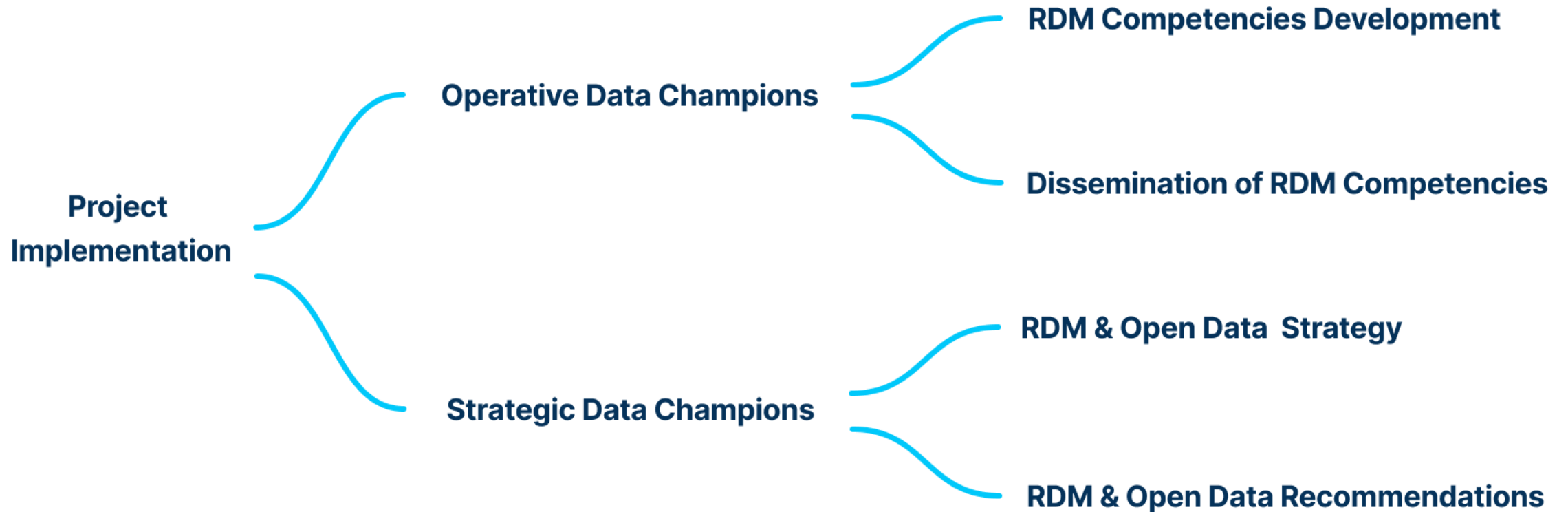
Will I get support?
Your work will be coordinated and supported by the DAU (Data Access Unit) which will provide you with the following services:

- Onboarding meeting - where you will get relevant information and material
- Targeted RDM training - where you can learn about various RDM topics
- DCs Webpage - where your Data Champion profile will be published
- Educational online materials - you will get access to a variety of educational resources that will facilitate your advocacy for good RDM practices within your department
- RDM templates - which you can tailor to your subject-specific needs and use in your workshops/lectures
- Communication channel - to help you cooperate and communicate with other DCs and DAU

Scan the Code to Apply!



Implementing



Implementing

Project: Data Champions			2024								2025								
ID	ACTIVITY	Activity Owner	May	June	August	September	October	November	December	January	February	March	April	May	June	September	October	November	December
01	Onboarding Meeting	DAU	Completed																
02	Q&A Support	ODCs		Planned duration	Planned duration	Planned duration	Planned duration	Planned duration	Planned duration	Planned duration	Planned duration	Planned duration	Planned duration	Planned duration	Planned duration	Planned duration	Planned duration	Planned duration	Planned duration
03	Communicate RDM Guidelines	SDCs		Planned duration	Planned duration	Planned duration	Planned duration	Planned duration	Planned duration	Planned duration	Planned duration	Planned duration	Planned duration	Planned duration	Planned duration	Planned duration	Planned duration	Planned duration	Planned duration
04	Plan & Strategize Improvements	SDCs		Planned duration	Planned duration	Planned duration	Planned duration	Planned duration	Planned duration	Planned duration	Planned duration	Planned duration	Planned duration	Planned duration	Planned duration	Planned duration	Planned duration	Planned duration	Planned duration
05	RDM Training for ODCs	DAU		Planned duration	Planned duration	Planned duration	Planned duration	Planned duration	Planned duration										
06	PPT Templates	DAU		Planned duration	Planned duration	Planned duration	Planned duration	Planned duration	Planned duration										
07	Subject-Specific RDM Training	ODCs			Planned duration	Planned duration	Planned duration	Planned duration	Planned duration	Planned duration	Planned duration	Planned duration	Planned duration	Planned duration	Planned duration	Planned duration	Planned duration	Planned duration	Planned duration
08	DCs Webpage	DAU		Completed															
09	Annual DCs Forum	DAU, ODCs, SDCs												Not started					

Legend: Completed Planned duration Not started

[Staff web](#) > [Research](#) > [Research data](#) > [Data Champions](#)

[På svenska](#)

Data Champions at LTU

Data Champions at LTU play an important role in driving the transition to open research data at the university and are committed to fostering and facilitating this change across the university.

What is a Data Champion at LTU?

LTU's Data Champions are a group of researchers who form a network across all five departments with the assignment of supporting and assisting their departmental colleagues in adopting good research data management (RDM) practices and compliance with the FAIR principles (Findability, Accessibility, Interoperability, Reusability).

What do LTU's Data Champions do?

There are two different types of Data Champions at the University:

- Operative Data Champions
- Strategic Data Champions

Each department is assigned at least one Operative Data Champion and one Strategic Data Champion. Although they share common responsibilities of promoting open research data and advocating good RDM practices, they have different tasks.

Operative Data Champions

Operative Data Champions at LTU are dedicated to implementing data management practices and

Find on this page

[What is a Data Champion at LTU?](#)

[What do LTU's Data Champions do?](#)

[Operative Data Champions](#)

[Strategic Data Champions](#)

[By whom and how are the LTU Data Champions supported?](#)

What do LTU's Data Champions do?

There are two different types of Data Champions at the University:

- Operative Data Champions
- Strategic Data Champions

Each department is assigned at least one Operative Data Champion and one Strategic Data Champion. Although they share common responsibilities of promoting open research data and advocating good RDM practices, they have different tasks.

Operative Data Champions

Operative Data Champions at LTU are dedicated to implementing data management practices and supporting departmental colleagues and PhD students in data handling. They can help you, for example, in using relevant qualitative or quantitative data collection and analysis tools; data modeling and visualization tools and techniques; version control tools; data pre-processing, processing or post-processing issues; data management (e.g. storing and sharing your research data).

If you have questions about any of these topics, please contact your departmental Operative Data Champion. All Operative Data Champions provide Q&A drop-in support to their departmental colleagues. A list of Operative Data Champions at LTU with their competencies and Q&A drop-in times and dates can be found below:

Department of Social Sciences, Technology and Arts

Joel Lööv, Associate Senior Lecturer


Research subject: Human Work Sciences

Competencies: Qualitative data collection and analysis (e.g. interviews, workshops/focus groups, text), quantitative data collection and analysis (e.g. surveys, text), Data Visualization, SPSS, NVivo, Excel/spreadsheets, R, version control

Publications: [see personal page](#)

E-mail: datachampions-ETKS@ltu.se

Q&A drop-in: Tuesdays 13:00–14:30, room: A147

[Zoom](#) : only if he is out off office

Find on this page

[What is a Data Champion at LTU?](#)

[What do LTU's Data Champions do?](#)

[Operative Data Champions](#)

[Strategic Data Champions](#)

[By whom and how are the LTU Data Champions supported?](#)

Department of Social Sciences, Technology and Arts

Joel Lööv, Associate Senior Lecturer


Research subject: Human Work Sciences

Competencies: Qualitative data collection and analysis (e.g. interviews, workshops/focus groups, text), quantitative data collection and analysis (e.g. surveys, text), Data Visualization, SPSS, NVivo, Excel/spreadsheets, R, version control

Publications: [see personal page](#)

E-mail: datachampions-ETKS@ltu.se

Q&A drop-in: Tuesdays 13:00–14:30, room: A147

[Zoom](#) : only if he is out off office

Department of Health, Education and Technology


Johan Jirlén, Senior Research Engineer

Research subject: Biomedical Engineering

Competencies: Data collection and data handling with MATLAB and MATLAB scripting.

Publications: [see personal page](#)

E-mail: datachampions-HLT@ltu.se

Q&A drop-in: Thursdays 13:00–14:00, room: S252, alternatively [Zoom](#) 

Department of Civil, Environmental and Natural Resources Engineering


Maxim Smirnov, Associate Professor

Research topic: Applied Geophysics

Competencies: Geoscientific data management, Data referencing and citation, Data access portals, Data ethics, Data analysis methods, Data visualization tools and techniques, Version control tools, Software and programming languages, Cloud storage (Nextcloud), Federated data access to distributed data..

Publications: [see personal page](#)

E-mail: datachampions-SBN@ltu.se

Q&A drop-in: Thursdays 9:00–11:00, room: T1314, alternatively [Zoom](#) 

Vedad Coric, Research Engineer

Find on this page

[What is a Data Champion at LTU?](#)

[What do LTU's Data Champions do?](#)

Operative Data Champions

[Strategic Data Champions](#)

[By whom and how are the LTU Data Champions supported?](#)

Simon Andersson, doctoral student

Research subject: Information Systems

Competencies: Qualitative data, information classification, information security

Publications: [see personal page](#)

E-mail: datachampions-SRT@ltu.se

Q&A drop-in: Tuesdays 13:00–14:00, [Zoom](#) ↗

Department of Engineering Sciences and Mathematics

Corina Etz, Senior Lecturer

Research subject: Applied Physics

Competencies: Physics computational methods: DFT, ASD, MD, MC (including software packages: SPRKKR, UppASD, Quantum Espresso, FLEUR/Eik), Data post-processing (Xmgrace, Gnuplot, awk, bash script, Origin, Excel), Text editing (LateX, Vim).

Publications: [see personal page](#)

E-mail: datachampions-TVM@ltu.se

Q&A drop-in: Thursdays 9:00–10:00, [Zoom](#) ↗

Strategic Data Champions

Strategic Data Champions at LTU are responsible for helping their departmental colleagues and PhD students plan and strategize how RDM practices and the transition to open research data can be improved and accelerated in their department. If you have a suggestion on how this could be achieved, please contact your departmental Strategic Data Champion. Below is a list of all strategic Data Champions at LTU and their contact information:

Department of Social Sciences, Technology and Arts

Roine Wiklund, Senior Lecturer

Research subject: History

Find on this page

[What is a Data Champion at LTU?](#)

[What do LTU's Data Champions do?](#)

[Operative Data Champions](#)

[Strategic Data Champions](#)

[By whom and how are the LTU Data Champions supported?](#)

Simon Andersson, doctoral student

Research subject: Information Systems

Competencies: Qualitative data, information classification, information security

Publications: [see personal page](#)

E-mail: datachampions-SRT@ltu.se

Q&A drop-in: Tuesdays 13:00–14:00, [Zoom](#) 

Department of Engineering Sciences and Mathematics


Corina Etz, Senior Lecturer

Research subject: Applied Physics

Competencies: Physics computational methods: DFT, ASD, MD, MC (including software packages: SPRKKR, UppASD, Quantum Espresso, FLEUR/EIk), Data post-processing (Xmgrace, Gnuplot, awk, bash script, Origin, Excel), Text editing (LateX, Vim).

Publications: [see personal page](#)

E-mail: datachampions-TVM@ltu.se

Q&A drop-in: Thursdays 9:00–10:00, [Zoom](#) 

Strategic Data Champions

Strategic Data Champions at LTU are responsible for helping their departmental colleagues and PhD students plan and strategize how RDM practices and the transition to open research data can be improved and accelerated in their department. If you have a suggestion on how this could be achieved, please contact your departmental Strategic Data Champion. Below is a list of all strategic Data Champions at LTU and their contact information:

Department of Social Sciences, Technology and Arts

Roine Wiklund, Senior Lecturer

Research subject: History

Find on this page

[What is a Data Champion at LTU?](#)

[What do LTU's Data Champions do?](#)

[Operative Data Champions](#)

[Strategic Data Champions](#)

[By whom and how are the LTU Data Champions supported?](#)

Strategic Data Champions

Strategic Data Champions at LTU are responsible for helping their departmental colleagues and PhD students plan and strategize how RDM practices and the transition to open research data can be improved and accelerated in their department. If you have a suggestion on how this could be achieved, please contact your departmental Strategic Data Champion. Below is a list of all strategic Data Champions at LTU and their contact information:

Department of Social Sciences, Technology and Arts

Roine Wiklund, Senior Lecturer

Research subject: History

Publications: [see personal page](#)

E-mail: datachampions-ETKS@ltu.se

Department of Health, Education and Technology

Lars Nyberg, Professor and Head of Subject

Research subject: Physiotherapy

Publications: [see personal page](#)

E-mail: datachampions-HLT@ltu.se

Department of Civil, Environmental and Natural Resources Engineering

Thorkild Maack Rasmusen, Professor and Head of Subject, Head of Division

Research subject: Applied Geophysics

Publications: [see personal page](#)

E-mail: datachampions-SBN@ltu.se

Department of Computer Science, Electrical and Space Engineering

Torbjörn Löfqvist, Associate Professor

Research subject: Electronic Systems

Find on this page

[What is a Data Champion at LTU?](#)

[What do LTU's Data Champions do?](#)

[Operative Data Champions](#)

[Strategic Data Champions](#)

[By whom and how are the LTU Data Champions supported?](#)

Department of Health, Education and Technology

Lars Nyberg, Professor and Head of Subject

Research subject: Physiotherapy

Publications: [see personal page](#)

E-mail: datachampions-HLT@ltu.se

Department of Civil, Environmental and Natural Resources Engineering

Thorkild Maack Rasmusen, Professor and Head of Subject, Head of Division

Research subject: Applied Geophysics

Publications: [see personal page](#)

E-mail: datachampions-SBN@ltu.se

Department of Computer Science, Electrical and Space Engineering

Torbjörn Löfqvist, Associate Professor

Research subject: Electronic Systems

Publications: [see personal page](#)

E-mail: datachampions-SRT@ltu.se

Department of Engineering Sciences and Mathematics

Roberts Joffe, Professor and Head of Subject

Research subject: Polymeric Composite Materials

Publications: [see personal page](#)

E-mail: datachampions-TVM@ltu.se

Find on this page

[What is a Data Champion at LTU?](#)

[What do LTU's Data Champions do?](#)

[Operative Data Champions](#)

[Strategic Data Champions](#)

[By whom and how are the LTU Data Champions supported?](#)

By whom and how are the LTU Data Champions supported?

Data Champions at LTU are coordinated and supported by Data Access Unit (DAU), a group of librarians and research data coordinators at LTU who work on research data management.

DAU supports Data Champions by organizing and coordinating training for them on various relevant RDM topics, providing them with a network of communication channels and material for the workshops, sharing information on opportunities to develop RDM competencies and skills, and holding meetings to meet their needs.

Find on this page

[What is a Data Champion at LTU?](#)

[What do LTU's Data Champions do?](#)

[Operative Data Champions](#)

[Strategic Data Champions](#)

[By whom and how are the LTU Data Champions supported?](#)

Updated: 24 September 2024



Luleå University of Technology is in strong growth with world-leading competence in several research areas. We have a total turnover of SEK 2 billion per year, 1,500 employees, and 17,900 students.

Contact

Luleå University of Technology
97187 Luleå, Sweden
Phone: +46 (0)920-491000
Registration number: 202100-2841

[Contact us](#)

[Directions](#)

[LTU maps](#)

Shortcuts

[In case of incident or emergency](#)

[Report faulty facilities or equipment](#)

[Governing documents](#)

[Press](#)

[Organisation](#)

[University Library](#)

About this website

[Whistleblowing](#)

[Processing of personal data, GDPR](#)

[Accessibility](#)

[Cookies](#)

[Contact for website](#)

[På svenska](#) →

[Luleå University of Technology](#) →

[Student webs](#) →

Implementing

RDM Training Schedule		2024						
ID	Topic	Topic Owner	May	June	September	October	November	December
01	Introduction to RDM and LTU Drive	Johanna Cinber (DAU)	■					
02	Creating DMP	Johanna Cinber (DAU)		■				
03	Publishing Data with SND's DORIS	David Ryner (SND's Training Coordinator), Elin Hallman (SND's Research Data Advisor)			■			
04	Introduction to Information Security & Research Data Classification	Sari Saarela (LTU's Information Security Coordinator), Kajsa Borgström (LTU's Legal Advisor)				■		
05	Archiving Research Data	Anna Christensen (LTU's Archivist)					■	
06	Legal Aspects of RDM	Kajsa Borgström & Josefin Sundin (LTU's Legal Advisors)					■	
07	Export Control and LTU's Guidelines for Export Control	Anna Richter (LTU's Export Control Coordinator)						■

Measuring

Project objective:

- Increasing RDM knowledge and competencies

KPI indicators:

- RDM self-assessment tool for ODCs
- ODCs seek feedback from workshop participants
- DCs assess the outreach effectiveness (Number of workshops and Drop-ins, Number of participants, FAQ)

Measuring

Project objective:

- Increasing the LTU Drive utilization rate

KPI indicators:

- DCs assess the outreach effectiveness
- Application confirmation in SDPlus

Measuring

Project objective:

- Increasing published research data

KPI indicator:

- DCs assess the outreach effectiveness

