

On a (cultural) journey towards FAIR data: some Dos and a few don'ts

Alessandra Soro
4TU.ResearchData Community
Manager



Get in touch with us

Alessandra Soro

4TU Community Manager

a.soro@tudelft.nl

Marta Teperek

TU Delft and 4TU Data Stewardship Coordinator

m.tepererek@tudelft.nl

Data Sharing in Psychology: A Survey on Barriers and Preconditions

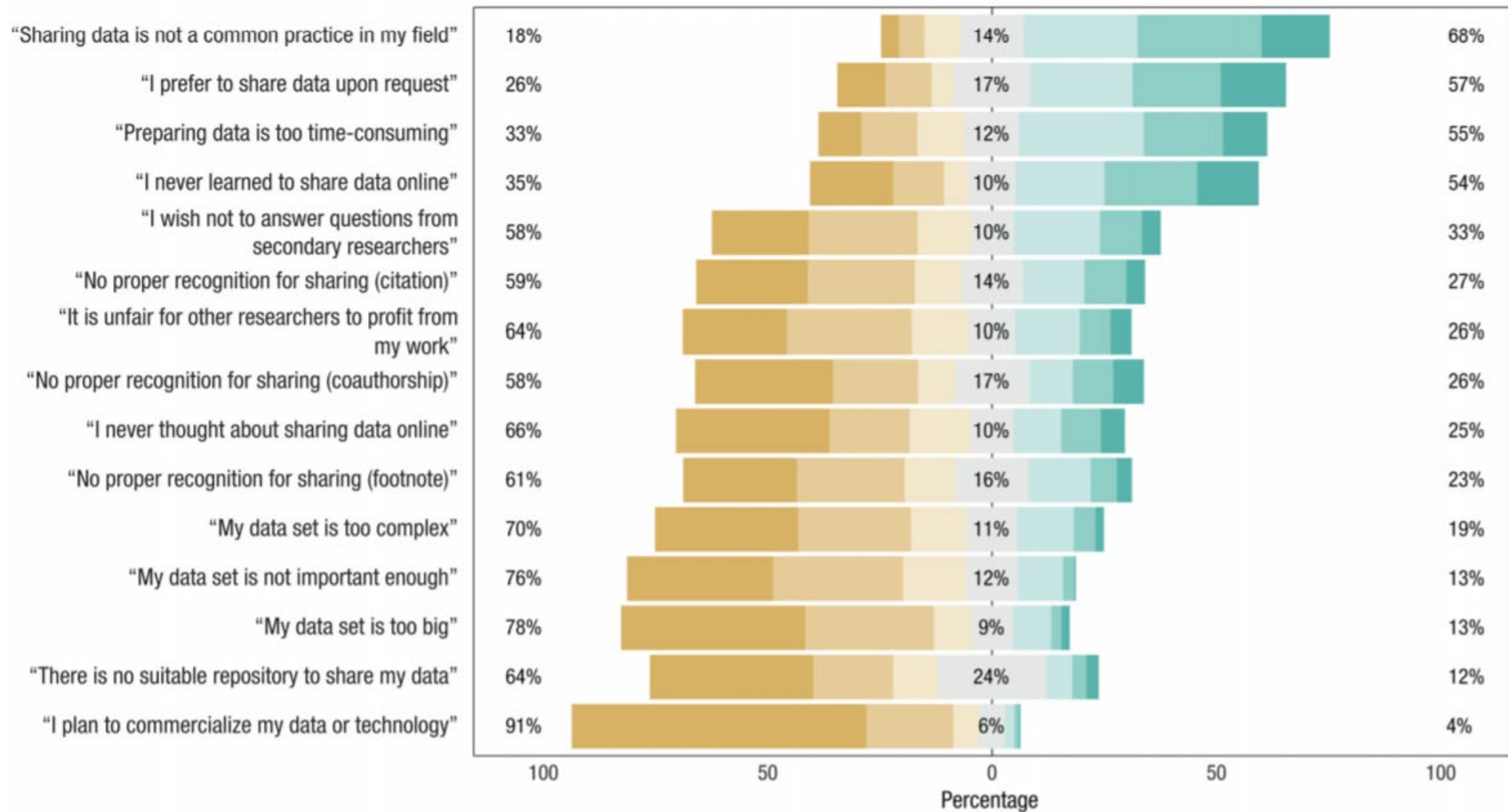


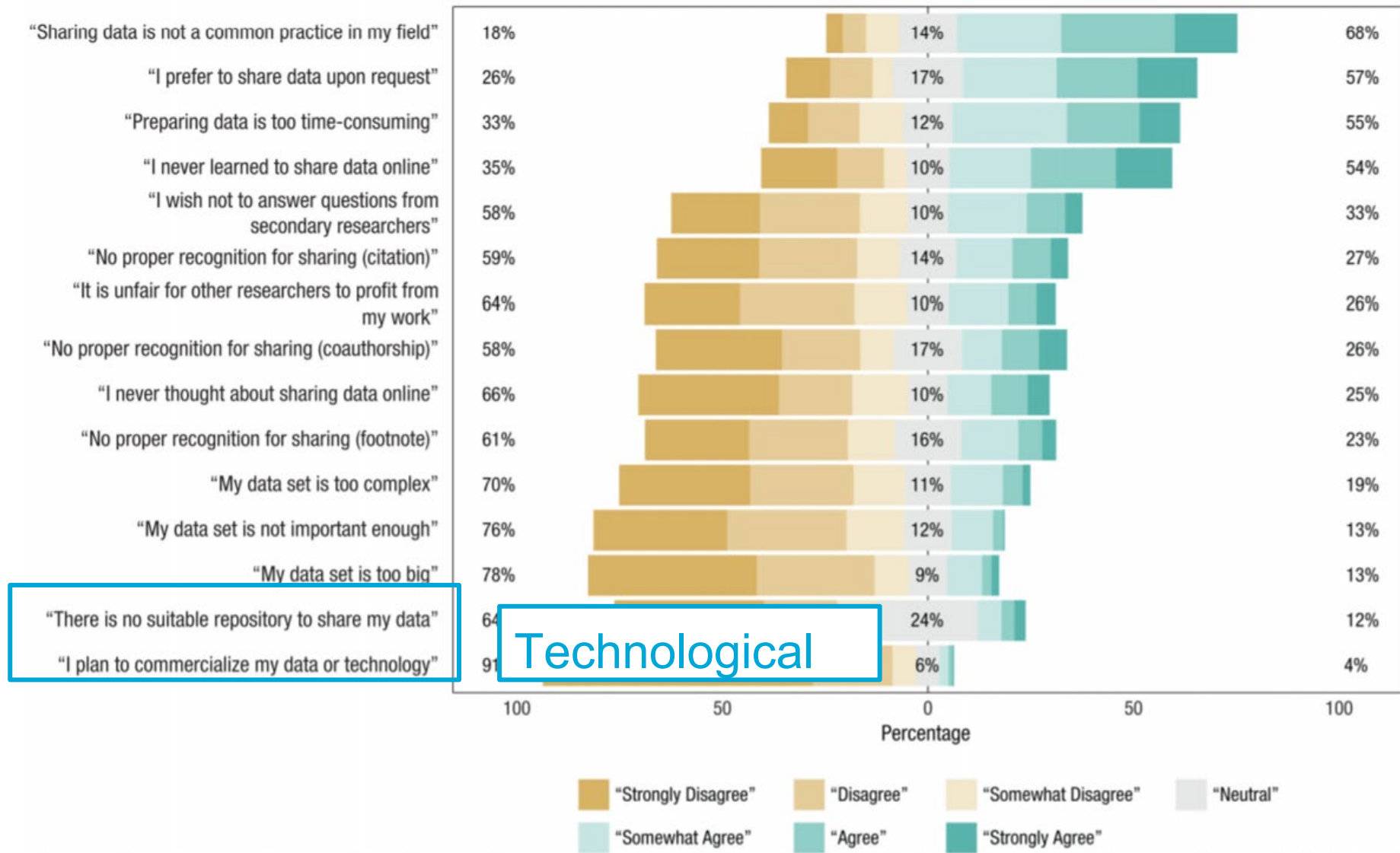
**Bobby Lee Houtkoop¹, Chris Chambers², Malcolm Macleod³,
Dorothy V. M. Bishop⁴, Thomas E. Nichols^{5,6,7}, and
Eric-Jan Wagenmakers¹**

¹Psychological Methods Programme Group, University of Amsterdam; ²Brain Research Imaging Centre (CUBRIC), School of Psychology, Cardiff University; ³Centre for Clinical Brain Sciences, University of Edinburgh; ⁴Department of Experimental Psychology, University of Oxford; ⁵Oxford Big Data Institute, Li Ka Shing Centre for Health Information and Discovery, Nuffield Department of Population Health, University of Oxford; ⁶Wellcome Centre for Integrative Neuroimaging, FMRIB, Nuffield Department of Clinical Neurosciences, University of Oxford; and ⁷Department of Statistics, University of Warwick

Advances in Methods and
Practices in Psychological Science
2018, Vol. 1(1) 70–85
© The Author(s) 2018
Reprints and permissions:
sagepub.com/journalsPermissions.nav
DOI: 10.1177/2515245917751886
www.psychologicalscience.org/AMPPS
SAGE

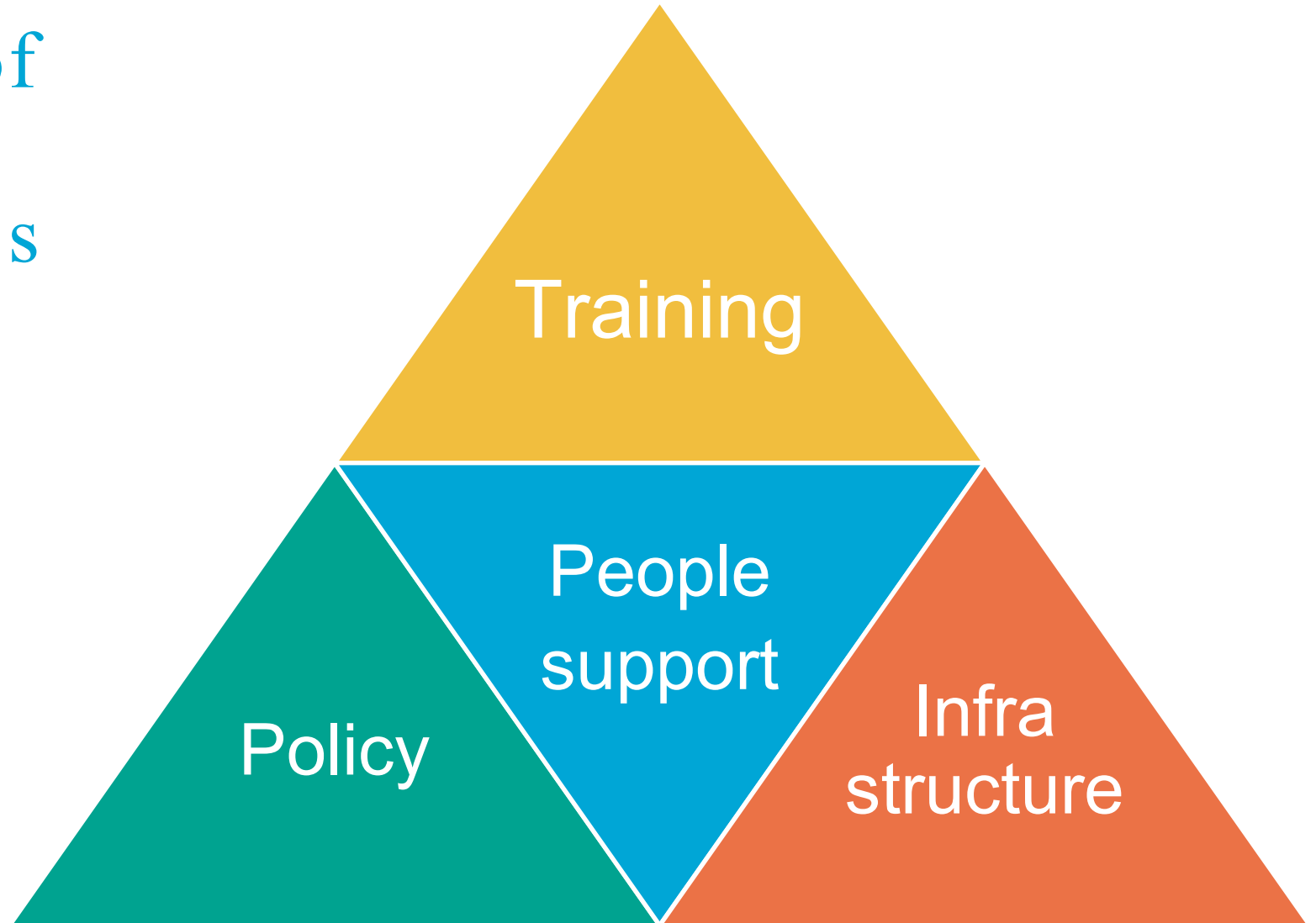
[https://doi.org/10.1177/
2515245917751886](https://doi.org/10.1177/2515245917751886)





Developing a community
enables cultural change

Key elements of Research Data support services



1. People support
for research data

Data Stewards Team



Digital Competence Centre Team: Data Managers and RSEs



Data Champions



Anton Akhmerov
@AkhmerovAnton

...

This is the point hardest to explain to colleagues that never published their research data.

Publishing data protocol:

1. zip
2. upload

That's it.



Eva Kalmar

Lecturer
Applied Science
Department: Science Education
and Communication
   



Feijia Yin

Assistant Professor
Aerospace Engineering
Department: Control and
Operations
   



Suryansh Sharma

Msc Candidate
Electrical Engineering,
Mathematics and Computer
Sciences
  

Open Science Community Delft



Nergis Tömen

Postdoctoral researcher
Electrical Engineering,
Mathematics and Computer
Science

Department: Computer Science



Jacky Bourgeois

Assistant Professor
Industrial Design Engineering

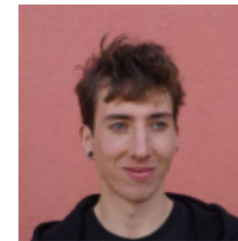


Delft Open Hardware



José Carlos Urrea Llanusa

Research Software Engineer
Digital Competence Center, ICT
Innovation



Jerry de Vos

MSc Candidate
Industrial Design Engineering
Department: Integrated Product
Design



2. Policy

Key players



Karel Luyben
ex-Rector Magnificus



Anke Versteeg,
Policy Advisor



Alastair Dunning,
Head of Research
Services

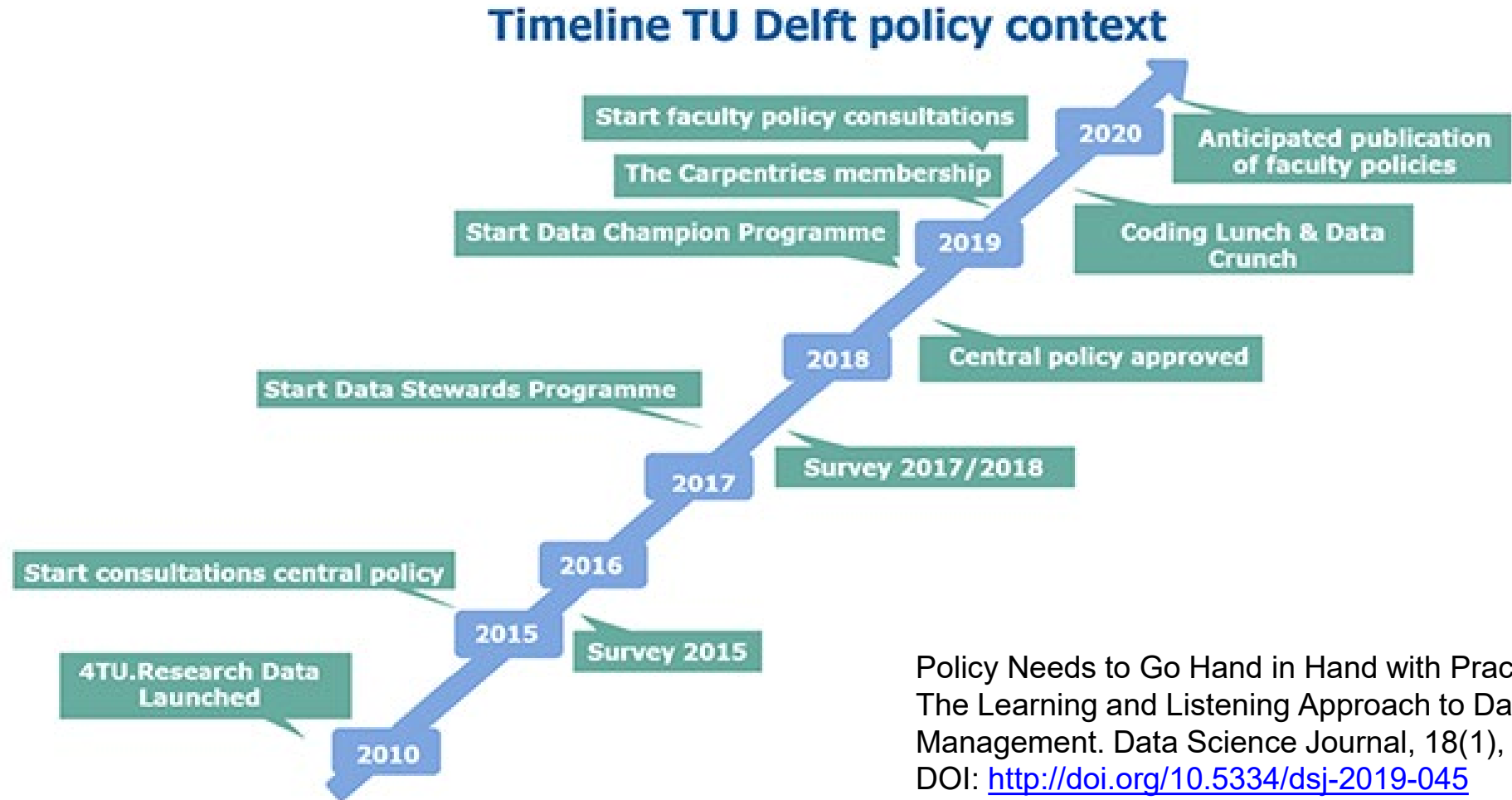


Paula Martinez
Lavanchy
Research Data Officer

TU Delft Research Data Framework Policy and faculty policies



TU Delft Research Data Framework Policy and faculty policies



TU Delft Research Software Policy



How did software policy come about?

“If can’t publish my software open source, I will develop a script that will send a new invention disclosure form with every Github commit!”



Anton Akhmerov
Associate Professor at TU Delft
and Data Champion

TU Delft Research Software Policy

main goals

- Encourage open-source software development
- Recognize and reward software development

3. Training

Key players



Eirini Zormpa
Ex-Trainer



Ashley Cryan
Data Manager



Aleksandra
Wilczynska
Data Manager



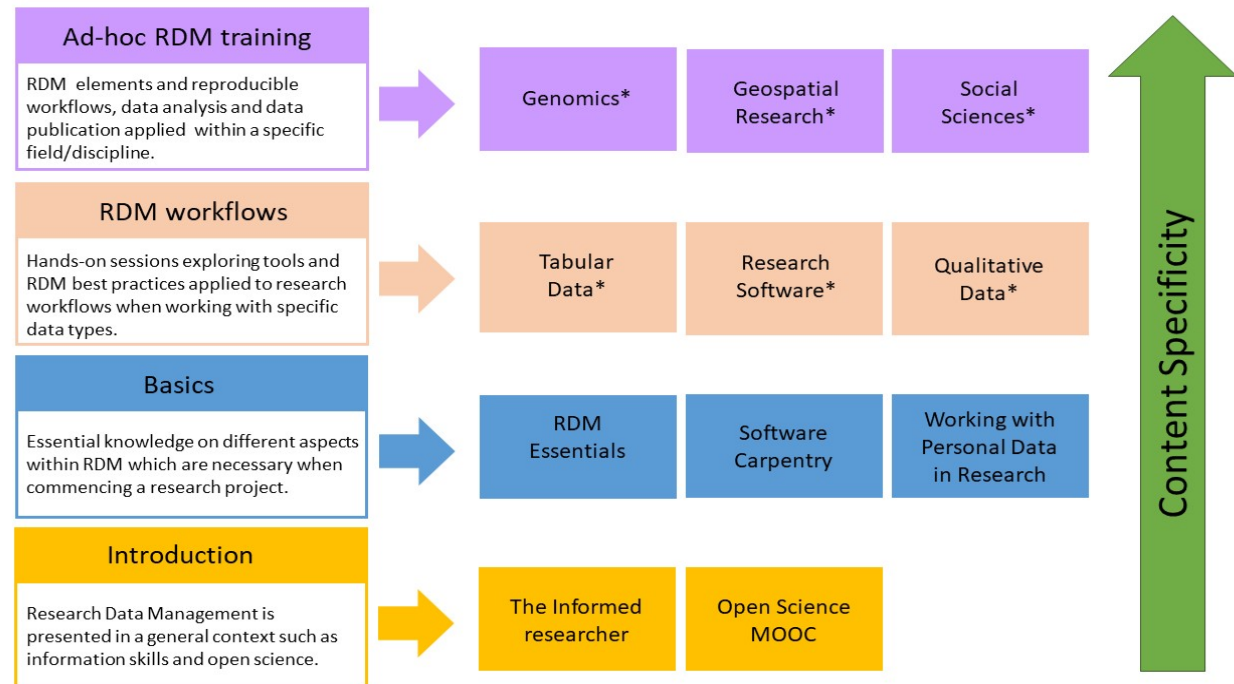
Paula Martinez
Lavanchy
Research Data Officer



Meta Keijzer
de Ruyter
Project Manager

Introduce vision on training (2019) – to deliver, we need to work together

Vision for RD & Software Management training – TU Delft Library



Vision for Research Data & Software management training at TU Delft (2.0). Zenodo.
<https://doi.org/10.5281/zenodo.5615099>

Genomics Data Carpentry

Led by researchers
supported by Data Stewards
enabled by the University.



Victor Koppejan



Raul Ortiz Merino



Marcel
van den Broek

4. Infrastructure

Thank you:



Iulia Popescu
Communications
Advisor



Alessandra Soro,
Community Manager



Kees den Heijer
Technical Team Lead



Madeleine de Smaele
Repository Manager



Roel Janssen
Lead Developer



Egbert Gramsbergen
Data Engineer



Marta Teperek
Data Stewardship Coordinator



Repository for science, engineering, and design
250+ members

Explore the repository
(why and how to upload)

Check it out

Join our community

Join us



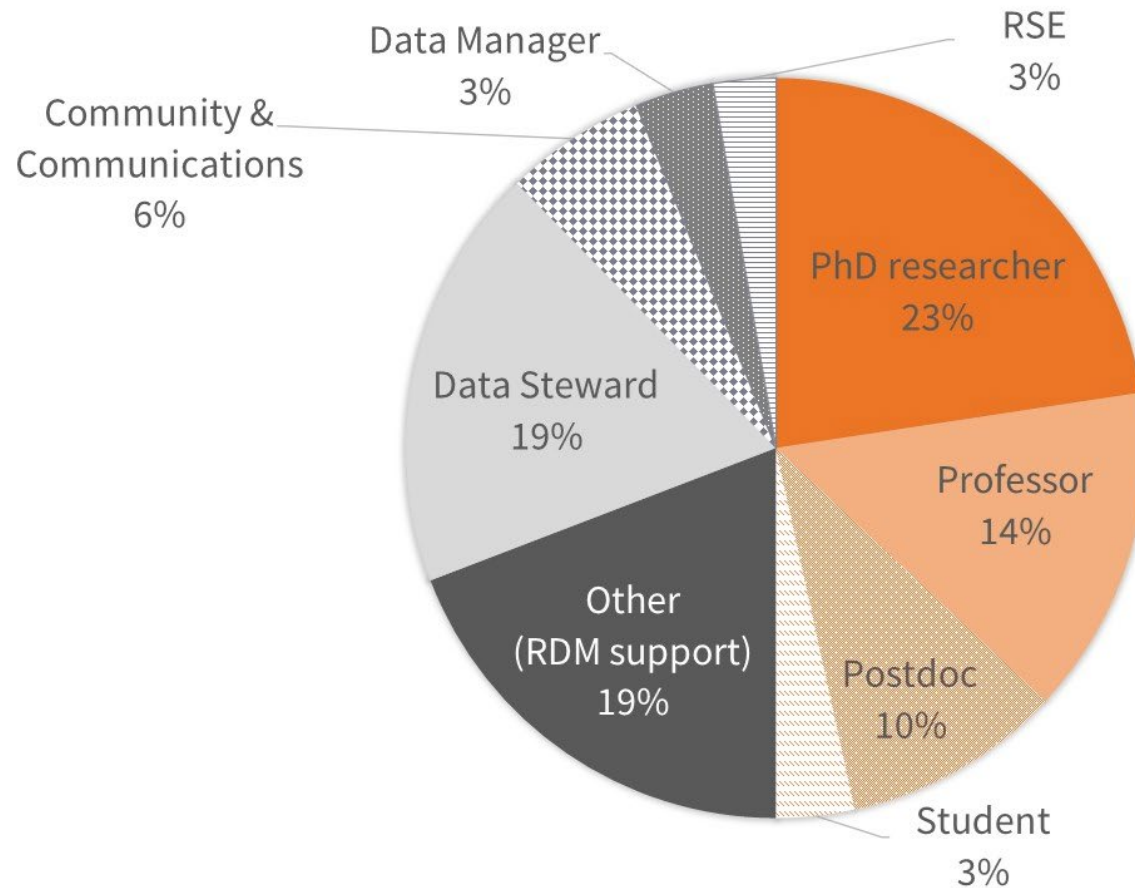
UNIVERSITY
OF TWENTE.

4TU.Federation



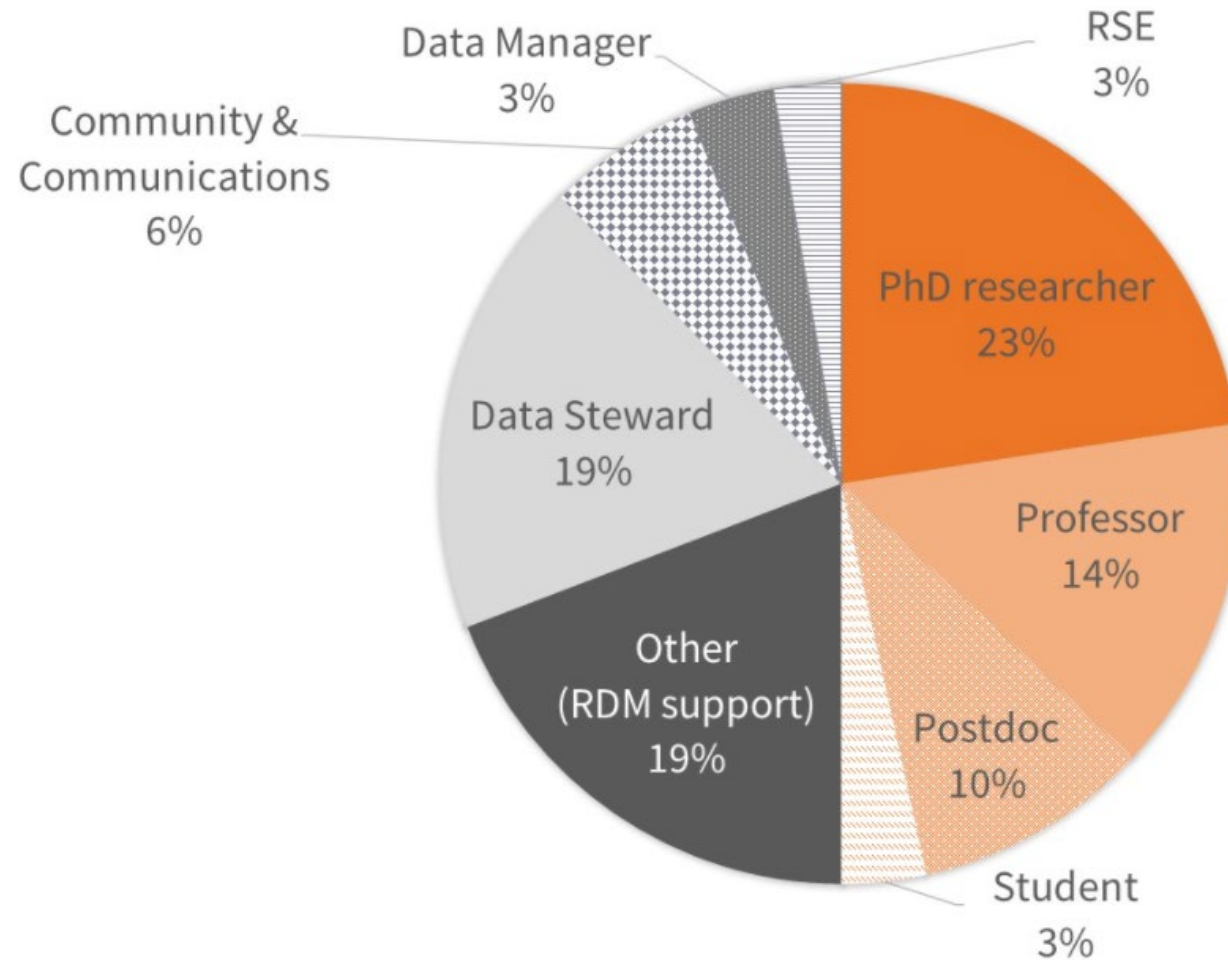


Who are our community members?

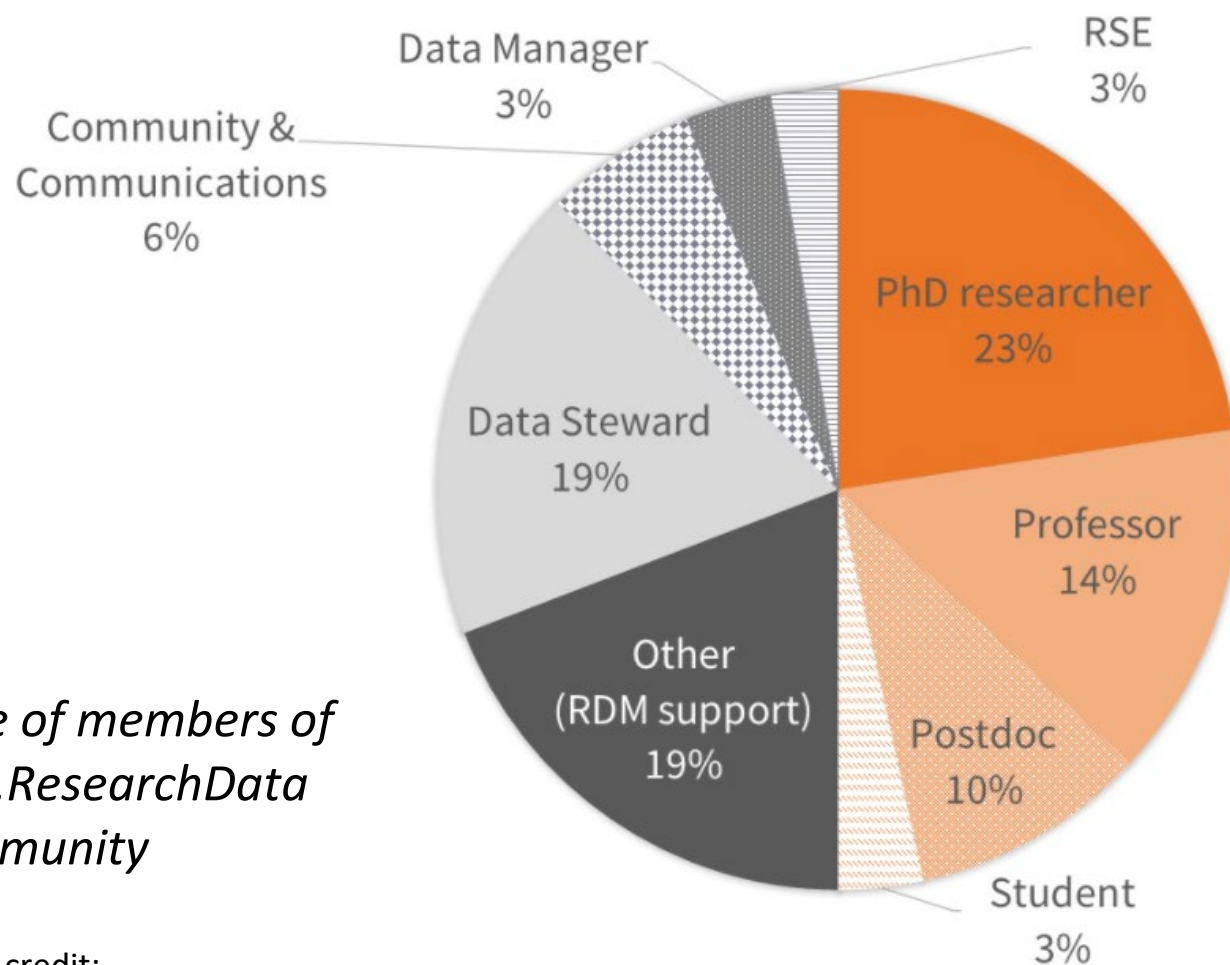


The role of the community in infrastructure development

Our members' expertise



Community can drive innovation



*Type of members of
4TU.ResearchData
community*

Image credit:
Connie Clare

Partnership with the research community helps to achieve sustainability and an infrastructure which is agile and able to respond to changing needs.

Examples of community-driven infrastructure innovation

Jupyter FAIR project (NWO-funded proposal)

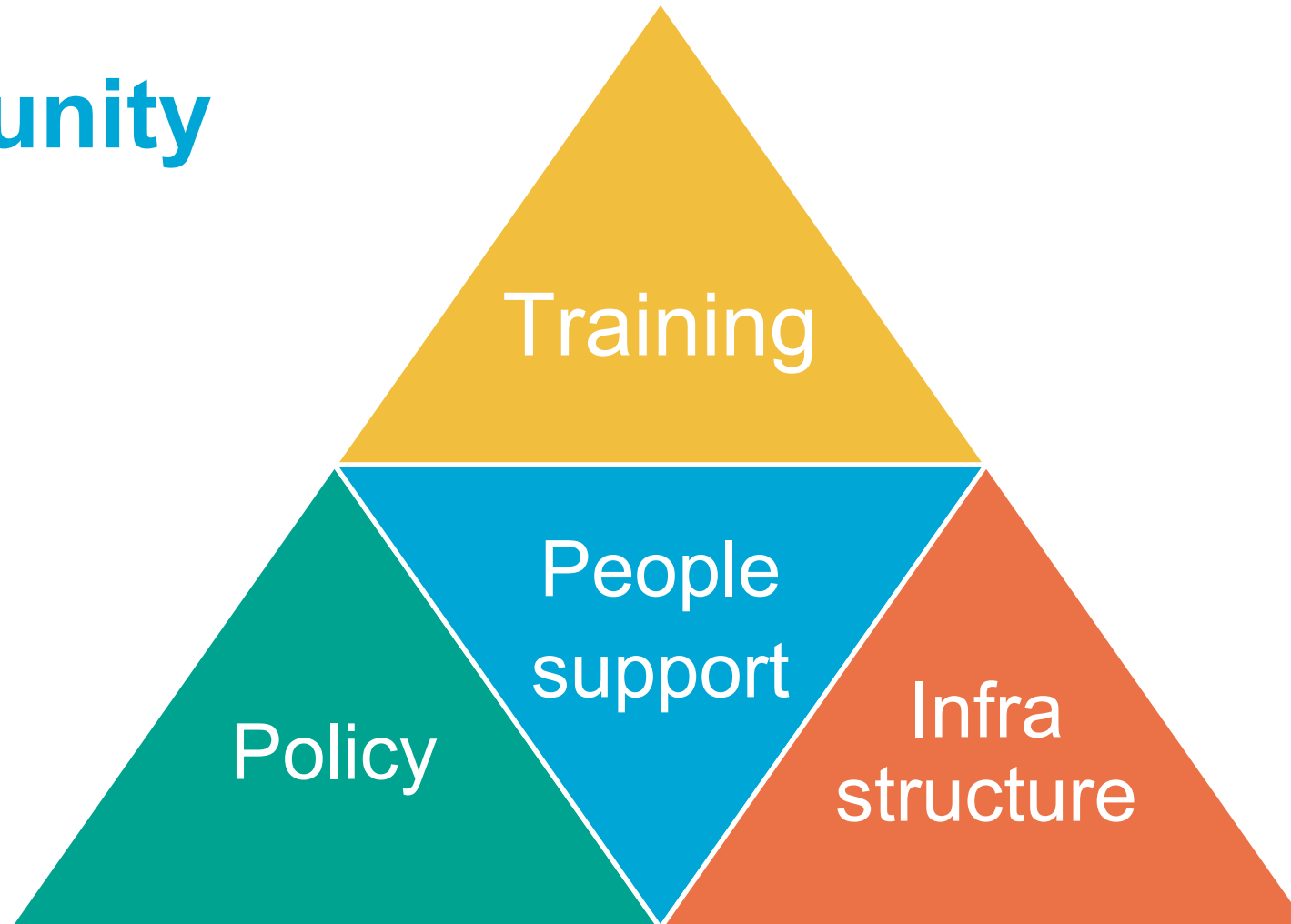
“With JupyterFAIR we aim to provide a simple and easy to use tool for researchers to implement FAIR data sharing practices throughout the entire research lifecycle”



Professor Serkan Girgin,
University of Twente

But community cannot effectively
contribute to a proprietary software.

Community



Get in touch with us

Alessandra Soro

4TU Community Manager

a.soro@tudelft.nl

Marta Teperek

TU Delft and 4TU Data Stewardship Coordinator

m.tepererek@tudelft.nl

Thank you for your attention